

BRISTOL RAILWAYANA AUCTIONS

CATALOGUE OF AUCTION LOTS 7th OCTOBER 2018

10am to 4pm, (Auction Commences 11.00am, Viewing from 10am)



**ABBAYWOOD COMMUNITY SCHOOL,
FILTON, BRISTOL. BS34 8SF.**

WWW.BRISTOLRAILWAYANA.CO.UK

TERMS & CONDITIONS OF SALE

1. BIDDING

If you intend to bid, please register your name and address at the Cashiers Desk before the sale commences and obtain a Bidding Number. Please do not deface or fold these numbers and return the number to the cashiers at the end of the auction. All bids made shall be treated as offers made upon these conditions of sale.

The Buyer will be the person making the highest acceptable bid to the Auctioneer at the fall of the hammer.

2. AUCTIONEERS DISCRETION

In the case of any dispute, the Auctioneer has the full right of settlement. The Auctioneer may:

- Refuse any bid.
- Advance bidding as they see fit.
- In the event of a dispute of Buyer at the fall of the hammer choose to immediately re-sell the lot.
- Withdraw, divide or combine any lots with another or others.
- Exclude any person from the auction room.

3. RESERVES

Lots put up for sale are subject to any reserve price imposed by the Seller. The Auctioneer may bid on behalf of the Seller up to the amount of the reserve. The Seller shall not personally or through an agent bid on any of his own lots

4. PAYMENT

May be made by cash or cheque (with a valid cheque guarantee card) up to any amount. Cheques over the cheque card limit will be accepted, but items purchased will be held pending clearance of the cheque, arrangement for the collection of items can be made once clearance of the cheque has been confirmed.

5. POSTAL/COMMISSION BIDS

We actively encourage postal bids from those unable to attend the Auction personally. Postal bids are accepted free of charge, but must be submitted in writing/e-mail using the form in this catalogue or from the website. Postal bids will only be placed if the company are holding appropriate payment details prior to commencement of the Auction. Lots will be bought at one step above the highest bid in the room, subject to the maximum amount stated and any reserve that may apply. We do not accept postal bids on the day of the auction.

6. REMOVAL/STORAGE OF LOTS

Successful purchases can be paid for and removed at any time during the sale, but preferably during the interval or at the end of the auction, subject to payment conditions being met (see 3 below). The Auctioneer will at the request of the Buyer store larger items at its premises for up to one month at the Buyers risk. Collection will be by prior arrangement only. Items can be delivered at cost.

FRONT COVER: Unrebuilt West Country 34102 (Lapford) leaving Bournemouth Central, by Rex Conway.

7. DESCRIPTION OF LOTS

The catalogue description of lots, in most cases, has been supplied by the vendor. (Many lots will be unseen until the day of the sale!) We therefore cannot be held responsible for errors in description, condition, authenticity or defects.

8. INSPECTION

Ample opportunity is given for inspection of lots and each purchaser by making a bid acknowledges that he/she has satisfied themselves as to the condition of lots and the Terms & Conditions of Sale. Customers are reminded that certain lots may be fragile due to age, wear etc. When handling and viewing such material they are asked to treat items with the utmost care and attention. We will expect any damage to be made good at an amount agreed with the Auctioneer.

9. FORGERIES

Notwithstanding conditions 7 & 8, if the Auctioneer receives notice in writing from the Buyer within 7 days of the sale that in the Buyers opinion a lot is a forgery, and on giving such notification the lot in question is returned to the Auctioneer in the same condition as that at the time of the sale, then if, on considering such evidence as the Buyer supplies to prove the Buyers assertion, the Auctioneer (or an mutually agreed Expert) decides that the lot is a forgery the sale of the lot will be rescinded and the purchase price repaid to the Buyer.

10. LIABILITY OF THE AUCTIONEER

All persons attending a Sale under the conduct of the Auctioneer shall be deemed to be on the land and premises at their own risk and shall have no claim against the Auctioneer in respect of cancellation/postponement of a sale or any loss, accident or injury, however occasioned.

NOTE

Many lots are of such a nature or age that precludes their being in pristine condition. Some catalogue descriptions may refer to damage or restoration that has been done. However, omission of any such reference does not imply that a lot is free from defects nor does the reference to any defect imply the absence of others.

- 1 A silver plate tea strainer marked "Hebridean Spirit" in the bowl.
- 2 A silver plate candle holder made by Mapping and Webb and engraved GWR with the serial number L2035RSTV.
- 3 A silver-plated soup ladle engraved LMS hotels in the shaft.
- 4 A papier-mâché hinged snuff box with a picture on the lid and marked "Great Eastern Railway Express".
- 5 Five vintage railway peaked caps.
- 6 GWR hand-operated sleeper drill.
- 7 A small glass marked GWR/MD on the side (about 4" high).
- 8 A shot measure marked LNER and inscribed WR Loftus (about 2.5" high).
- 9 Souvenir vacuum flask "Flying Scotsman".
- 10 Royal Mail mounted crest.
- 11 2 small albums of black/white postcard size steam loco prints. Lots of Bristol/Bath.
- 12 BR Poster, "A Weekend In London". (pre-decimal)

The Following 8 lots are from the archives of the famous Bristol based professional Photographer & Author Rex Conway. We are privileged to be able to offer these items which come with copyright. He was formally known as Rex Coffin and this may be mentioned in some of his early work. Rex achieved international fame with his superb posed exposure for the GWR 150 of the King and HST leaving Paddington.

- 13 Signed Book. Shildon: The Last Parade and 4 Boxes of negatives from the event.
- 14 Signed Book. Mainline Steam in the 70s and 800 B/W Negatives some shown in the book.
- 15 24 boxes of Black/White Railway negatives of preserved steam in the 1960/70/80s Hundreds of exposures.
- 16 Signed Book. Southern Steam Journey and a quantity of B/W prints used in the book.

- 17 3 Boxes of Railway DVDs.
- 18 Box of approx. 500 Colour Negatives/Prints of Preserved Mainline Steam runs 1970-2000.
- 19 Original Oil Painting by Rex Conway of GWR Broad Gauge loco FIREFLY at Box Tunnel.
- 20 Original Oil Painting by Rex Conway of GWR Broad Gauge IRON DUKE at BRISTOL Old Station.
- 21 MR Lookout Armband, some damage to outer edges.
- 22 MR Cap Badge, script style, one fixing pin missing.
- 23 10 x railway buttons. 3 x LNER, 1 x LNER (script), 6 x SR.
- 24 6 x railway buttons. 1 x GWR, 1 x GWR (script), 1 x CIE, 1 x Underground, 1 x GW & LMS, 1 x SW & LNER.
- 25 15 x LMSR railway buttons, various sizes.
- 26 Reproduction GWR Cap Badge and Lone star 000 gauge model railway break van (diecast).
- 27 New York Subway Conductor Badge No 84212.
- 28 Chinese Railway "Kia Ping" Cap Badge 1910.
- 29 BR Inspector Fabric Cap Badge
- 30 LNER cast metal paperweight depicting A3 "Flying Scotsman" with corridor tender, possibly issued at the British Empire Exhibition in 1924 and similar to an example held in the permanent collection of the Science Museum.
- 31 LNER cast metal paperweight depicting A4 "Silver Link" with corridor tender, possibly issued at the British Empire Exhibition in 1924 and similar to an example held in the permanent collection of the Science Museum.
- 32 4 x LNER silver plated forks, 1 x GCR silver plated fish knife, 2 x ECJS silver plated fish knives, 1 x LNER silver plated fish knives.
- 33 1 x LMS silver plated teaspoon, 1 x BR(W) Hostels silver plated fork, 1 x LMS Hostels silver plated fork, 1 LMS silver plated fork, 1 x BTHS silver plated knife, 1 x GWR silver plated knife.

- 34 Brass Valve marked 1990 from USA Dock tank (0-6-0T), this locomotive was the first of its class unloaded at Avonmouth Docks. Lot includes newspaper clippings and a photograph relating to its arrival.
- 35 2 x vinyl LP's. 1) Transacord - On the Footplate. 2) Argo Transacord - Shap.
- 36 6 x Books. 1) Tales of the Iron Road (Hind). 2) The Locomotive at Work and Rest (Hind). 3) Observers Book of Railways (1955). 4) Reflections on the Portishead Branch (Vincent). 5) The Making of the Railway (Rolt). 6) GWR Stars, Castles and Kings (Nock).
- 37 BR(M) signal lamp interiors (2) plus Bardic lamp.
- 38 Don Brecon print "Country Connection" 37"x 27" framed.
- 39 Rubber stamps, goods/cargo related, some GWR. plus, box of rubber dates (14 items).
- 40 Misc. BR items. Ties (4), Intercity Parker pens (2), Intercity lapel badge (2), Envelopes BR67 (9), Drivers handbook, Intercity clips, 30 items in total.
- 41 BR ticket clippers (4), ticket inspection embossing clipper, plus number counter. 6 items in total.
- 42 SR track chair (unrestored).
- 43 Modern GW Jacket (medium) with Merlin logo.
- 44 Modern BR Jacket (small) with double arrow logo.
- 45 Carriage destination board (yellow with black lettering), Plymouth to Leeds.
- 46 BR(S) window destination labels, various destinations inc: Littlehampton, Dover Priory, Bognor Regis and Birmingham Snow Hill.
- 47 GWR diagrams of special wagons (July 1939).
- 48 GWR CME dept accounts code and key book (Jan 1946).
- 49 2 x Books by Roger Harris. Allocation history of BR Diesels and Electrics (Final Editions), noted that these are now hard to find. Plus VHS tape Steam around Bristol (Terry Nicholls).

- 50 GWR Handbill with details of the funeral of King George V.
- 51 GWR Signal finial, unusual flat base example.
- 52 BRS Enamel sign – Train Service.
- 53 Cast iron LSWR Trespass sign, welded nicely.
- 54 Boxed models – Hornby 00 35028 Clan Line together with Hornby 00 T9 4-4-0.
- 55 Boxed models – Hornby 00 Dean Goods and Hornby 00 DMU.
- 56 Two Lima 0 gauge GWR coaches together with a NBR four wheeled van.
- 57 GWR poster (Trains from Birmingham (Snow Hill)) – poor condition.
- 58 Box of OS maps.
- 59 Three GWR jigsaws.
- 60 Cast iron wagon plate SR 1862, unrestored ex-wagon condition.
- 61 Number 65 bridge plate.
- 62 Lot of miscellaneous railway badges.
- 63 Destination panel (plastic), 12 stations mentioned from Totnes to Manchester.
- 64 Box of miscellaneous model items.
- 65 Box of miscellaneous model items.
- 66 Large card, hanging timetable South Devon and Cornwall stations, 1961. BR green printing including closed branches.
- 67 A GWR straight edge, GWR ruler and GWR shock absorber.
- 68 GNR bridge plate 13.
- 69 GWR 1900 framed plan of Newport.

- 70 GWR 1900 framed plan of Hereford.
- 71 Three drawer pulls – GWR, NER, LNWR.
- 72 Two GNR carriage keys, ticket nippers (not marked), three armbands 2 x BR, 1 x SAR.
- 73 Bound GWR magazine for 1938.
- 74 Bound GWR magazine for 1927.
- 75 Four boxed Peco 00 scale points.
- 76 Saltney Ferry "Repairs Advise" C/I Plate.
- 77 Cambrian Wagon Works Builders Plate.
- 78 Red Metro-Cammel "Tank Shaped" Plate, 1966.
- 79 Metro-Cammel Midland Works 1933 Plate (Restored).
- 80 Metro-Cammel Midland Works 1934 Plate (Un-restored).
- 81 Head Wrightson 1948 Plate.
- 82 "no 580" Plate.
- 83 Gen'ly Repaired "Sc" Plate, 3-1958.
- 84 LNE to Carry 3 tons luggage plate.
- 85 P&W MacLellan Plate (Restored), Clutha Works, Glasgow, 1947.
- 86 Plate "11 tons 21-0 x 9-0".
- 87 Gen'ly Repaired/Re-bodied Shildon 6003, 1234-1979.
- 88 Gen'ly Repaired by FCC 1944 (Brass), GW 80111, 3/1944.
- 89 BR-SC Star Plate (Black), 196A, May 1952.

- 90 Green SR 1316 Oval Plate.

- 91 LMS 492404 "D" Plate, 21T.

- 92 SR 38677 "D" Plate, 13T.

- 93 W 35298 "D" Plate, 20T.

- 94 Standard Wagon Co "Bell" Plate.

- 95 Registered BR(E) Plate (Black), 4924, 16T.

- 96 Registered LMS Plate (Red), 169146, 1940, 14T.

- 97 Tank Wagon Owners Plate, ESSO Petroleum, 6003.

- 98 Owners Plate, WD No45.

- 99 Container Plate BD4584B.

- 100 Hunslet brass makers radiator plate, ex loco.

- 101 12 x Coloured British Railways pencils, various colours.

- 102 Railway refreshment room opal pendant electric light with ceiling fitting. In good condition.
We recommend the purchaser gets this checked/installed by a qualified electrician if
the buyer intends to use.

- 103 Cook's 1923 Traveller's Handbook for Norway, Sweden, Denmark & Iceland. Leather bound
in fair condition, maps intact.

- 104 One of those horrible fake brass candle lights marked GWR but probably only made in the
last twenty years, plus two other incomplete examples.

- 105 Southern Railway handbill Excursion to Southampton Docks to see the R.M.S. Aquitania
(45,647 tons). Dated April 1936 with a small repair to the top by using another handbill.
6/- from Weymouth. R.M.S Aquitania was a four funnelled British Ocean Cunard liner in
service from 1914 until 1950.

- 106 Wartime Publication (Hardback). Railway Posters and the War. Good condition, masses of superb posters.
- 107 GWR original framed notice, Signal Dept 1937.
- 108 GWR original small framed poster. "Working of Slip Coaches" summer 1889. Refers to Narrow gauge (which was actually standard gauge) and Broad gauge trains.
- 109 GWR original framed notice "Regulations as to working slip coaches" in an original GWR frame (1880).
- 110 GWR original framed poster notice "Market Ticket Arrangements" June 1885. Numerous closed stations mentioned.
- 111 LMS book matches "Coronation Scot".
- 112 Alloy Shed plate 82A, Bristol Bath Road. Front repainted.
- 113 GWR Quad Royal Timetable Poster (framed). "National Emergency TT Sept 25th 1939". Issued just after the start of WW2. Slight foxing, many closed stations and branches.
- 114 A file of railway ephemera/paperwork and documents, lots of pre-grouping. Worth a look!
- 115 BR(W) S&DJR Supplementary Operating's issued 1.1.1958. Everything you need to know about operating the Somerset & Dorset Joint Line.
- 116 A collection of 22 BR Rail Tour Itineraries (Mostly 1980s) these are the official BR file copies from the organising office.
- 117 A mixed bag of maritime, Royal Navy and Merchant Navy notices Inc. photographs, some Bristol interest.
- 118 22 x Meccano Catalogues from 1970s, very colourful, some duplication.
- 119 A pack of bus and railway tickets (good assortment)
- 120 Book "Railway Horse Brasses" by Ran Hawthorne (signed), sought after.
- 121 Book "British Railways Totem Station Signs" by D. Brennand. This is the small size 1st edition from 1991, GC.

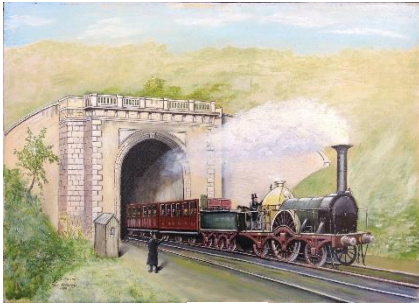
- 122 DISTRICT Rly map of London (1905) on linen, some wear. (Delicate, handle with care).
- 123 S&DJ Rly 2 x Handbills both dated July 1927. "Special Excursion to Glastonbury and Weston-super-Mare" and the other to "Bath & Bristol", fair condition.
- 124 Midland Railway small pocket-sized leaflet advertising picture postcards & souvenirs in VGC.
- 125 LMS publication (1946) "Ships of the Narrow Seas". When the LMS operated 57 vessels.
- 126 P&A Campbell (paddle steamers) pictorial envelope (1952) and White Funnel Fleet booklet (pre-decimal).
- 127 BR(S) Southern Rambles for Londoners by S.P.B. Mais this is the BR copy of the popular SR publication.
- 128 LMS Publication (1925) instructions for Station Masters, Ticket Inspectors and Collectors, VGC.
- 129 GWR original small coloured poster DORCHESTER agricultural show, many closed stations, GC.
- 130 BRADSHWS Continental Guide, July 1907, fair condition.
- 131 Book "The Official Railway Postcard Book" by John Alsop, very sought after, GC.
- 132 North British Locomotive Co, Glasgow Anniversary booklet 1903-1953 VGC still has the miniature works plate cover which is usually missing.
- 133 A folder of Southern Railway paperwork.
- 134 Book "Landscapes under the Luggage Racks" by Greg Norden, signed, GC.
- 135 A quantity of British Joint Services "Recognition" journals 1950/60s aircraft/ships and armoured fighting vehicles.
- 136 A quantity of modern image wagon publicity leaflets (some duplication) useful for modellers.
- 137 Enginemans log book from Bristol driver Jones from the end of steam 20.4.1964 until 18.2.1965 lots of problems mentioned caused by BR's complete lack of interest in maintenance when steam was on the way out. Driver Jones later acted as 2nd man on the HST's world record breaking run (12 June 1973).

- 138 A box of railway books.
- 139 BR(LMR) Uniform Pea Jacket with BR buttons & BR Porters waistcoat with striped sleeves and one other item. (3 items)
- 140 LMS Block Instrument case, front only, marked LMS.
- 141 Reproduction Totem MAERDY, Chocolate/Cream. Professionally made by Trackside, in good condition. MAERDY was a former Taff Vale station in the Rhondda Valley, South Wales.
- 142 Drop case pendulum time clock with wooden case.
- 143 BR Bardic hand lamp.
- 144 C/I locomotive shed plate 84F, Stourbridge Junction in ex-loco condition.
- 145 Canadian Pacific framed print in official CPR Frame "The Canadian".
- 146 Station wicker laundry basket with lid, marked K1 which we are led to believe refers to Keynsham & Somerdale.
- 147 Official framed print "The Broadway Limited" Canada Grand Trunk Railway System > Pennsylvania Railway. New York to Chicago in 20 hours.
- 148 2 x Wooden Signal Box Diagram Frames 26 x 12 & 38 x 15, believed to be MR/LMS.
- 149 3 x Model ships in bottles. 1 x large & 1 x medium Thames Barges and 1 x small Schooner.
- 150 LMS earthenware bottle "FOR IODINE ONLY" Return to LMS DERBY STORES with stopper and LMS label.
- 151 BR Black Brake Van side lamp. 1 x glass needs replacing. Replacement glass included.
- 152 3 x Alloy plates "This Locomotive was named during the GWR 150 Celebrations 1985".
- 153 Canadian Pacific Railway book "The Imperial Highway" dated 1910 by A.N. Homer a superb book bound in luxe padded cloth. Advertising of CPR Suppliers, presented to CPR clients and travel agents around the world. Title plate by Norman Wilkinson. Don't miss this one.
- 154 A box of Diesel Traction official handbooks.

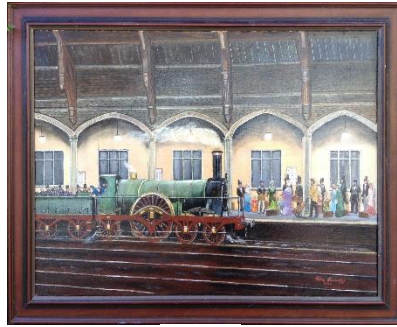
- 155 A lot of Signalling items, mostly suitable for spares (repeaters etc).
- 156 Misc. lot of railwayana. Worth a look!
- 157 4 x Framed Edwardian period engineers cut away drawings of engines. Supplements to early Model Engineer.
- 158 42" Chest woollen V neck sweater with GWR badge and BR/WR First Aid. Together with a GWR 150 medal and several BR items.
- 159 A selection of BRITISH LOCOMOTIVE CATALOGUES published in the 1970's by Moorland publishing No's 2A, 3A, 3B, 4.5A and 5B noted. Industrial Railway Soc. Publications.
- 160 World Railways 1954/55 edition.
- 161 LMS framed advert, After Norman Wilkinson from Punch Coronation Edition April 28th 1937.
- 162 2 x C/I GWR oblong scale weights. Nicely marked GWR.
- 163 BR(W) Tail Lamp.
- 164 BR Fogmans Hand Lamp.
- 165 A Quantity of Working Time Tables mostly BR(W) including MAS Items.
- 166 A box of Ordnance Survey maps. Good selection.
- 167 A box of BR Public Timetables.
- 168 A box of Misc Railway & Transport Paperwork. Worth a delve.
- 169 2 x Wooden Drinks crates. 1 x Ushers Brewerys. 1 x Schweppes
- 170 A Quantity of WTTs mostly BR(W).
- 171 4 x GWR Early type Cast Iron Signal Box columns for Signal Wire tensions.
- 172 A box of Tilley lamp pieces. 1 x complete, suitable for spares several brass reservoirs.
- 173 Set of 96 DVDs of British Steam Railways, Circ 2007 by DeAgostini.

- 174 Laundry Basket marked GWR, with locking bar and lock.
- 175 Travellers Fare Menu folder with a selection of different menu's Inc Clyde Coast Pullman.
- 176 3 x Tea Plates. 1 x Bristol Band of Hope 1898 and 2 x Bristol District Independent Order of Rechabites. (This was a Temperance Society formed in 1835), GC.
- 177 A pair of china Staffordshire Dogs. Very popular with railwaymen and often pride of place in their parlours.
- 178 A quantity of laminated commercial Published Railway Photographs, some duplication.
- 179 Box of GWR Ground Signal parts, useful for spares. F64K Spectacle plate & F65 noted.
- 180 3 x railway souvenir wall plates. Cathedrals Express, Royal Scot, and County Class.
- 181 BR(W) Choc & Cream enamel sign "STATION" with pointing arrow. Double sided with the original wall mounting bracket. VGC with just a couple of tiny marks. Don't miss this one.
- 182 Southern Rly 4 aspect FOGMANS lamp marked S(E)R.
- 183 Small brass locomotive operating lever for steam valve.
- 184 Book; CANADA TODAY 1913 includes lots of Railway Interest and superb pics.
- 185 3 x paper fans. 2 x BOAC Speedbird and 1x STARFERRY Hong Kong, GC.
- 186 2 packs of vintage Playing cards, 1 x The Orient Line to Australia and 1 x in Canadian Pacific Box but contains LNER (Scarborough) Cards.
- 187 Hornby Boxed, Hammant & Morgan HM2000 Power Controller.
- 188 BR/BTC small poster (1960) MOVEMENT OF ENGINES in Motive Power depots, sheds, yards and sidings. Last steam issue.
- 189 Nice Tie with Railway Souvenir Badges. Good selection.
- 190 An album of transport book match covers. Railway-Shipping-Airline.
- 191 ABC Combine Volume 1969 Issue, no under linings.

- 192 A quantity of omnibus ephemera, inc Bristol fare books 1970s.
- 193 Approx. 150 different GWR Luggage Labels, G77s.
- 194 Box of 100s of good quality colour prints. Mostly modern image/preserved lines post 1996.
Most have some detail on the reverse, sold with copyright.
- 195 Wartime enamel sign, Allotments and Defence of the realm act.
- 196 Enamel wall sign "Blue Bell Tobacco" double sided.
- 197 Small collection of Lone Star model railway models.
- 198 Victorian book " Elliot's Scottish Hotel Steamship Directory" 1895/96 masses of superb
Steamship & Railway ads and pics. Covers are loose but easily repaired.
- 199 Book "The British Steam Railway Locomotive" E. L. Ahrons 1966.
- 200 Bachmann HO model of USA Niagara 4-8-4 tender engine for the New York Central RR
In original presentation box in VGC. Marked with smoke and headlight.
- 201 Yellow plastic ESSO 43642 Plate.
- 202 White "E" Gen'ly Repaired Plate, 10-1959.
- 203 B&W Reg Plate BR(M) 26281.
- 204 B&W Reg Plate L&NWR 14987.
- 205 Hurst Nelson Builders Plate, Motherwell, 1947.
- 206 Alloy Railway Executive Trespass Notice.
- 207 A galvanised water container embossed BR.
- 208 A large official GWR blueprint drawing for a tubular signal, lots of detail etc.



19



20



45



51



52



53

Totnes, Newton Abbot, Teignmouth, Dawlish, Exeter, Taunton, Bristol, Cheltenham, Birmingham, Stafford, Stoke-on-Trent, Manchester.

63

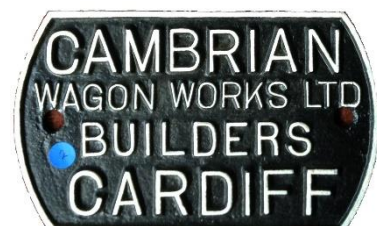
63

GWR		TRAINS from BIRMINGHAM		(Snow Hill)
		SATURDAY, JULY 30th		
TIME	NO. OF TRAIN	DESTINATION		
12.30	12	Avock's Green and all Stations to Leamington Spa.		
1.15	13	Stourbridge Jn., Kidderminster, Droitwich Spa, Worcester, Malvern, Hereford, Portpool Rd., All Stations to Kewstle.		
1.45	14	Stourbridge Jn., Kidderminster (for Bewdley, Tenbury Line and Severn Valley Line).		
2.15	15	Stourbridge Jn., Kidderminster, Worcester, Malvern and Hereford.		
2.45	16	Stourbridge Jn., Kidderminster, Worcester, Malvern and Hereford.		
3.15	17	Stourbridge Jn., Kidderminster, Worcester, Malvern and Hereford.		
3.45	18	Stourbridge Jn., Kidderminster, Worcester, Malvern and Hereford.		
4.15	19	Stourbridge Jn., Kidderminster, Worcester, Malvern and Hereford.		
4.45	20	Stourbridge Jn., Kidderminster, Worcester, Malvern and Hereford.		
5.15	21	Stourbridge Jn., Kidderminster, Worcester, Malvern and Hereford.		
5.45	22	Stourbridge Jn., Kidderminster, Worcester, Malvern and Hereford.		
6.15	23	Stourbridge Jn., Kidderminster, Worcester, Malvern and Hereford.		
6.45	24	Stourbridge Jn., Kidderminster, Worcester, Malvern and Hereford.		
7.15	25	Stourbridge Jn., Kidderminster, Worcester, Malvern and Hereford.		
7.45	26	Stourbridge Jn., Kidderminster, Worcester, Malvern and Hereford.		
8.15	27	Stourbridge Jn., Kidderminster, Worcester, Malvern and Hereford.		
8.45	28	Stourbridge Jn., Kidderminster, Worcester, Malvern and Hereford.		
9.15	29	Stourbridge Jn., Kidderminster, Worcester, Malvern and Hereford.		
9.45	30	Stourbridge Jn., Kidderminster, Worcester, Malvern and Hereford.		
10.15	31	Stourbridge Jn., Kidderminster, Worcester, Malvern and Hereford.		
10.45	32	Stourbridge Jn., Kidderminster, Worcester, Malvern and Hereford.		
11.15	33	Stourbridge Jn., Kidderminster, Worcester, Malvern and Hereford.		
11.45	34	Stourbridge Jn., Kidderminster, Worcester, Malvern and Hereford.		
12.15	35	Stourbridge Jn., Kidderminster, Worcester, Malvern and Hereford.		
12.45	36	Stourbridge Jn., Kidderminster, Worcester, Malvern and Hereford.		

57



76



77

SOUTH DEVON and CORNWALL LOCAL SERVICES	
11th SEPTEMBER, 1961 to 17th JUNE, 1962 (or until further notice)	
EXETER, NEWTON ABBOT, TORQUAY, PAIGNTON, KINGSWEAR, DARTMOUTH and PLYMOUTH	
CHURSTON and BRIKHAM	BRENT and KINGSBRIDGE (via SALCOMBE)
BODMIN ROAD, BODMIN GENERAL, WADSWORTH and PADSTOW	PLYMOUTH, TATTOCK Heath and LAUNCESTON
PLYMOUTH, TREURO and PENZANCE	LYSEARD and LOOE
PLYMOUTH, TREURO and PENZANCE	LOSTWITHIEL and FOWEY
PLYMOUTH, TREURO and PENZANCE	PAR and NEWQUAY
PLYMOUTH, TREURO and PENZANCE	TEURO and FALMOUTH
PLYMOUTH, TREURO and PENZANCE	TEURO, CHANCEWATER, PERMARPORTS and NEWQUAY (via)
PLYMOUTH, TREURO and PENZANCE	GWINEAR ROAD and HELSTON
PLYMOUTH, TREURO and PENZANCE	PENZANCE, ST. ERTH and ST. IVES

66



78



79



80



81



82



83



84



85



86



87



88



89



94



90



91



92



93



95



96



97



98



99



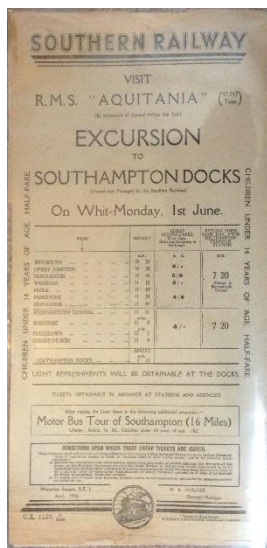
102



100



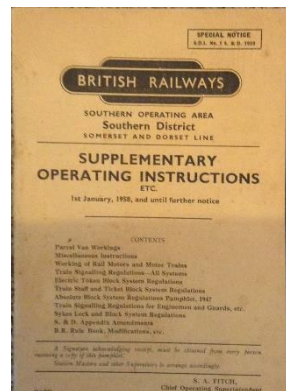
112



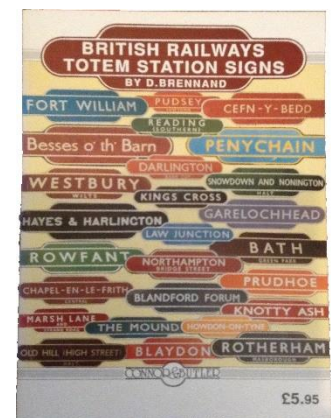
105



111



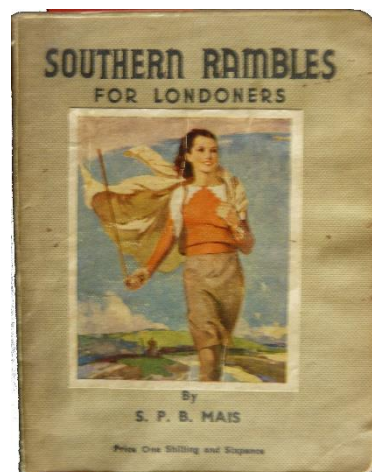
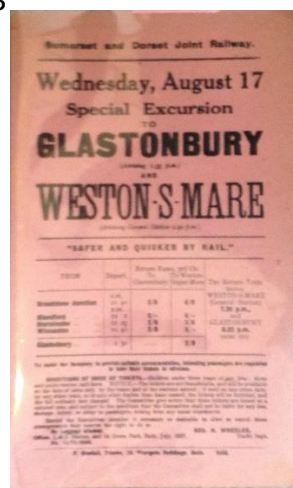
115



121



123



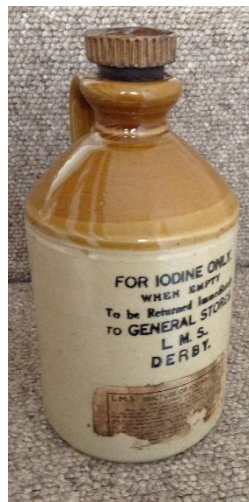
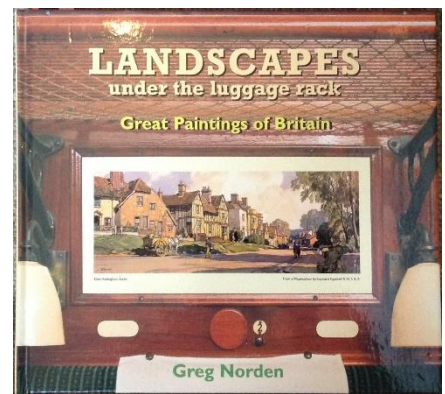
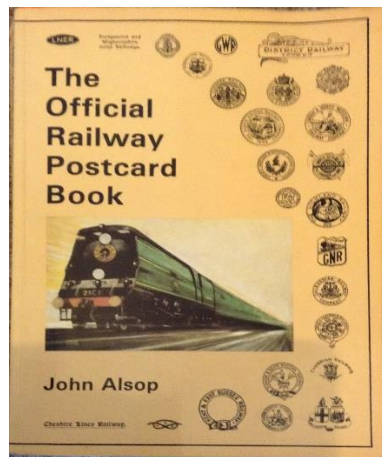
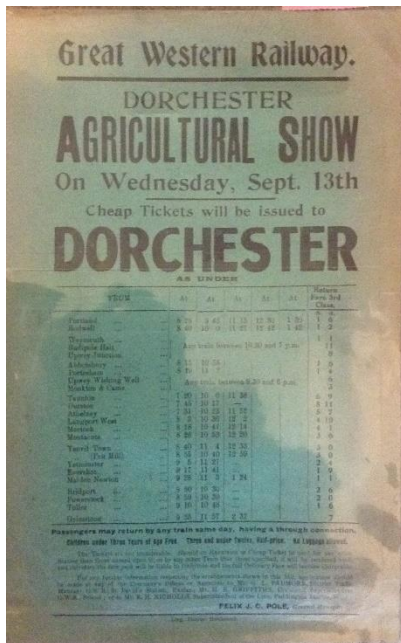
127



126



141

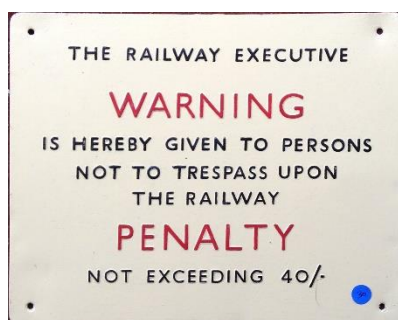




188



204



206



261



264



270



196



205



260



202



203



259



268

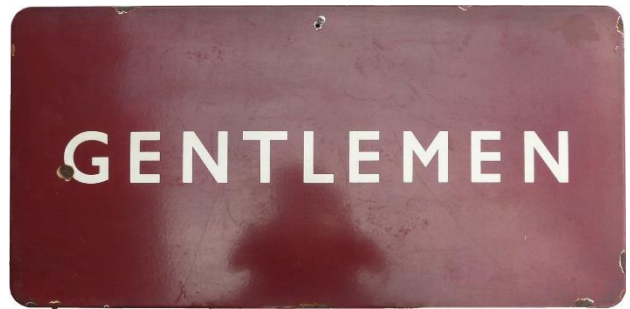


271





272



273



274



275



276

277



278

280



282



285



286



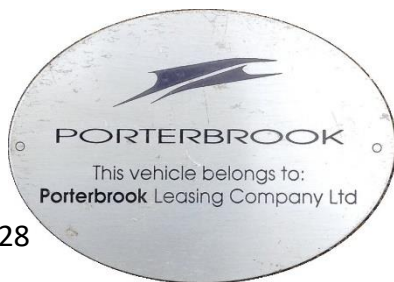
287



288



289



328



292



322



326



323



324

329



331



332



333



363



364



365



366



369



376



377



387



- 209 Six carriage prints by C.Hamillton Ellis, five are glazed one is not.
- 210 A box of hardware to include LMS bottle, LMS foot-tred etc., worth a look!
- 211 40 plus Irish tickets including County Donegal examples.
- 212 A large pair of wire cutters plated 'GWINEAR ROAD' a Cornish location.
- 213 Three railway carbide lamps plus 1 BR hand lamp.
- 214 Enamel sign 'Fragile Roof'.
- 215 Box of books to include GWR and SR examples 18 books in total.
- 216 A pressed alloy boxboard 'TIRYDIAL STATION' a south wales location.
- 217 A large collection of maps.
- 218 An unmarked Ian/Allan combined volume for 1964.
- 219 Three card sheets with 12 different designs for totem colours, unusual.
- 220 A couple of small signal box registers for BOREDON a SR location, interesting.
- 221 a wool blanket with an experimental logo on it.
- 222 A NI gate notice, metal screen printed.
- 223 A galvanised conical water container with a brass tap, embossed BR
- 224 A box of lamp spares, glasses etc.
- 225 A ticket dating machine.
- 226 Two tablet carriers plus a BR lamp.
- 227 A collection of lead letters spelling MANOR PARK, damage to a couple of the letters.
- 228 A tray of railway cutlery.

- 229 Diesel class D75XX and D15XX MANUALS plus a couple of other books.
- 230 A 1963 Railway gazetteer.
- 231 50 plus accident reports some a bit grim but interesting.
- 232 Box of official paperwork and books, a good delve!
- 233 Two wagon plates GR AT CATHAYS and Gloucester rly carriage works.
- 234 Tray of 100 plus b/w photos plus an album of official photos from Derby works plus 25 slides of the I.O.M. railways.
- 235 Bag of railway tickets, pre-grouping to modern plus platform tickets.
- 236 A small collection of share certificates.
- 237 A triangular cast brass advertising sign for STORK
- 238 A sunflower warning dial from D8206. Removed from the loco when it was in Barry scrapyard. A very rare souvenir.
- 239 Full size wooden replica of D1022 (Western Sentinel) number plate.
- 240 Full size wooden replica of Thor (D1677 /47 091/47 647/ 47 846) nameplate.
- 241 Full size wooden replica of Plymouth Laira depot plaque.
- 242 Box of mixed railway items.
- 243 Bag of PTTs, loose Br/SR staff magazines and signalling notices etc.
- 244 F&G large image of Thames Turbo DMU in a rural location, nice frame!
- 245 F&G front view close up of a class 170 DMU.
- 246 Quantity of British Railway Journal (loose).
- 247 Selection of Railway Mugs.

- 248 Carriage Print F&G in BR frame - London, Horse Guards, Whitehall by John L Baker (LNER post war series).
- 249 Railway buttons mixed LMS & BR plus a LMS railway service badge all in an old Players Navy Cut cigarette tin box.
- 250 Book by John Mander "Collecting Railwayana" & Book by John Owen "Exe Valley Railway" & "Collectors guides to Railwayana" various topics (4 in total).
- 251 Original Class 47 painting diagram for Parcels Sector livery.
- 252 BR(W) Engine loads for passenger, fish, milk, and parcels traffic. June 1963.
- 253 Sectional maps of British Railways as at December 1947 published by Ian Allen.
- 254 Various handbills from various regions for horse racing etc mostly 1960s.
- 255 Various DVD's inc Westerns, Deltics, Diesel Decade 1980s, Power of the Castles, Halls etc.
- 256 Various GWR paperwork.
- 257 Coach Plate, BR Metro Cammell lot 30502 built 1959.
- 258 Bundle of Modern Image BR posters.
- 259 BR(Sc) Tail Lamp (Black), including interior.
- 260 BR/GWR Signal Lamp Interior x 2.
- 261 BR Standard Handlamp (No Glass).
- 262 A selection of misc. blueprints and GW paperwork plus GWR Rulebook and GWR Table for Charges book, including Stoke Gifford West SB layout diagram.
- 263 Signal Box Register, Weston-super-Mare East, marked GWR but covers the period July to August 1955.
- 264 Railway Convalescent Home China Vegetable Turbine with Lid (Green crest type).
- 265 BR Detonator Box.

- 266 Eleven various reproduction railway posters (laminated).
- 267 5 x GWR Brass buttons in a GWR typewriter ribbon case.
- 268 Railway Convalescent Home China Sugar Bowl and China Milk Jug (Green crest type).
- 269 Framed LNER Poster "Mons Meg" (Reproduction).
- 270 Framed Limited Edition Cuneo Print "Autumn of Steam" includes certificate.
- 271 Framed Limited Edition Hawkins Print "Evercreech Junction".
- 272 Western Diesel Hydraulic "Low Entrance Mind Your Head" Alloy Plate.
- 273 BR(M) Enamel - GENTLEMEN.
- 274 BR(S) Enamel - WAITING ROOM.
- 275 BR(M) Enamel - NO EXIT.
- 276 Colmans Starch Street Enamel.
- 277 Replica London Transport Sign - Covent Garden.
- 278 Replica "Do Not Use the Toilet" Sign.
- 279 Bardic Lamp (Grey), looks unused.
- 280 SR Reproduction Carriage Poster - Map of the SR Network.
- 281 Enginemans Grease-top cap with reproduction SR badge.
- 282 Replica LNER gate notice.
- 283 Box of railway books.
- 284 Similar to lot 283 plus dvd's and videos.
- 285 C/I D Plate - Hurst Nelson 21T, B426207, 1957.

- 286 C/I D Plate - Charles Roberts 21T, B427634, 1957.
- 287 C/I D Plate - Met Cammell 21T, B421521, 1957.
- 288 BR Upper Quadrant Home Signal, complete with fittings. Excellent example, rare to see combined condition and completeness in a single piece.
- 289 General Purpose Lamp.
- 290 Box of Model Railway items, mainly LGB and Britains.
- 291 Two boxes of Model Railway equipment and rolling stock.
- 292 SR Enamel "Please show tickets" and three other enamels.
- 293 Carriage Board "Waterloo - Southampton - Bournemouth". Double sided with "Weymouth"
- 294 GWR KG5 Plaque, Swindon Works.
- 295 Festive Fiddler Headboard, 1986 Railtour - Class 44.
- 296 Box of Triang Model Railways, 00 Gauge.
- 297 Box of railway videos "Railscene" and DVDs.
- 298 Box of railway pictures and tickets.
- 299 BR(M) Enamel "Ladies Room".
- 300 Wagon plate, E305226 1949 21T Birmingham C&W, slight damage.
- 301 Wagon plate, E303851 1950 21T Butterley.
- 302 Wagon plate, E303786 1950 21T Butterley.
- 303 Wagon plate, B945092 1956 30T B'Ham.
- 304 Wagon plate, B412749. 1951 21T B'Ham.
- 305 Wagon plate, E303741 1949 21T Butterley.

- 306 Wagon plate, E303682 1949 21T Butterley.
- 307 Wagon plate, B426445. 1957 21T Hurst Nelson.
- 308 Wagon plate, B426293. 1957 21T. Hurst Nelson.
- 309 Wagon plate, E303506 1949 32T Butterley.
- 310 Wagon plate, B880651 1952 8T Darlington.
- 311 LMS Registration plate 1947, 7304 16T.
- 312 Repro 7924 smokebox plate in alloy.
- 313 Reproduction 45700 smokebox plate C/I.
- 314 The Cornishman headboard alloy (reproduction).
- 315 Ground signal disc only, Home.
- 316 Similar to lot 315.
- 317 Similar to lot 316, but with backing plate.
- 318 Similar to lot 315 except Distant.
- 319 John Player Special. Train headboard in alloy.
- 320 GWR titled gate notice C/I, needs some TLC.
- 321 BR(M) enamel poster board header, double size.
- 322 KINGS PARK . Scottish station totem sign (Single flanged) dull.
- 323 ST ANNES PARK . Western Region totem sign. (Double flanged) end repaired.
- 324 HACKBRIDGE . Southern Region totem sign. (Double flanged) chip repaired.
- 325 NEWFOUNDLAND. Reproduction Jubilee name plate. Good example

- 326 3 BR(W) lever lead plates and backing.
- 327 BR carriage plate Metro Cammell oval 30768 1958.
- 328 Porterbrook leasing plate from HST (alloy).
- 329 Small lettered plate. Empty to Bristol, Midland Road, WR.
- 330 Reproduction cabside 5884 in alloy.
- 331 Smokebox plate 5396, painted on the back. GWR 43xx class, 2-6-0. Built 31/10/1920, Swindon. Shed's include Neyland (87H), Swindon (82C) and Worcester (85A). Withdrawn 05/1960, Cut Up - Swindon 02/1961.
- 332 8428, Brass cabside. GWR 94xx class, 0-6-0PT. Built 28/02/1951, Bagnall & Co. Shed's include Oxley (84B). Withdrawn 10/62. Cut Up - Cashmore's 11/63.
- 333 9456, Brass cabside. GWR 94xx class, 0-6-0PT. Built 30/09/1951, Robert Stephenson & Hawthorns. Shed's include Duffryn Yard (87B), and Cardiff Cathays (87B). Withdrawn 04/1964. Cut Up - Birds, Risca, Newport 10/1964.
- 334 BR standard handlamp.
- 335 Similar to lot 334.
- 336 Square black lamp no markings seen.
- 337 Ticket dating machine.
- 338 Similar to lot 337, marked Edmondson inventor on the lips
- 339 Similar to lot 338, with Edmondson makers plate.
- 340 LNWR carbide handlamp.
- 341 BR(W) crossing gate lamp with interior and fitting for gate.
- 342 SR signal lamp interior.
- 343 BR(M) signal lamp interior, copper reservoir.

- 344 GWR signal lamp interior.
- 345 Wolverton works hydrant, C/I plate WOV 2" 33ft.
- 346 Wolverton works hydrant, C/I plate 1ft FH.
- 347 Southern Railway reproduction oval plate (brass) 2048.
- 348 LT metal carriage board, Wimbledon/Dagenham.
- 349 LT metal carriage board, High Street/Acton Town.
- 350 LT metal carriage board, Upminster/Ealing.
- 351 LT metal carriage board, Tower Hill/Circle line.
- 352 LT metal carriage board, Mansion House/Richmond.
- 353 A box of BR Stores Controllers Catalogues & plastic door notice Private also in Welsh with a few stores labels.
- 354 Carriage print framed, INSTOW. Sepia.
- 355 Carriage print framed, Hampshire Coast. Coloured.
- 356 Carriage print framed, Dorset Coast. Coloured.
- 357 2 MR c/I lever frame plates release lever & siding mounted on wood.
- 358 No Public Right of Way C/I marked BTW. British Transport Waterways.
- 359 LNWR bridge plate 71 small, piece missing.
- 360 BR bridge plate 316.
- 361 Wolverton works hydrant plate FH 33ft.
- 362 BR (SCR) small poster board enamel header, needs attention.
- 363 Wagon plate, B892365, Swindon, 12T 1950, restored face.

- 364 89D (Oswestry) Shed Plate, back has part restoration overspill but ex Loco seen on balance.
- 365 89B (Brecon) Shed Plate, back has part restoration overspill but ex Loco seen on balance.
- 366 89A (Oswestry) Shed Plate, back has part restoration overspill but ex Loco seen on balance, restored face.
- 367 LMS C/I registration plate 1944, 14T, not restored.
- 368 GWR pre-grouping "Ladies Room", restored face.
- 369 C/I loco registration plate, RE No 1744, 1953, restored.
- 370 GWR occupation instrument, restored.
- 371 C/I "Beware of Trains", small size.
- 372 Box of Railway Videos & Railway Children LP.
- 373 Box of Assorted Railway Books.
- 374 Similar to lot 373.
- 375 GWR C/I weight.
- 376 GWR Wagon Plate 3008, 14T, face restored.
- 377 GWR Wagon Plate 30416, 10T, face restored.
- 378 GWR pre-group ""Private", face restored.
- 379 Box of bound Railway World, 11 copies.
- 380 RAC Road Enamel "B3140 Burnham".
- 381 GWR A.T.C. wooden measure for checking the height of the A.T.C. Ramp. Marked GWR signalling dept 20.10.33.
- 382 GWR Glass Battery container.
- 383 GWR wooden wheelgauge for "Engine and Tender" ex Penzance.

- 384 BR(W) Station Supervisors Hat ex Westbury (Rare type).
- 385 Small milk churn, stamped H and E.M Day, Burnham-on-Sea.
- 386 2 x wooden open stores boxes, marked GWR from Swindon Works.
- 387 GWR Ladder, approx 10ft. Marked Bristol West Depot, 24/8/1925 and stamped GWR.
(This lot will need to be collected from a residential address in South Bristol by the purchaser).
- 388 BR(W) "EN PARTS" board. Marked "Return to Old Oak Common". Ex Syphon G W1013.
- 389 BR Coach Plate, Cravens Ltd, Sheffield, 30224, 1956.
- 390 BR Coach Plate, Metro Cammell, Sheffield, 30578, 1960.
- 391 Tin of Bicarbonate of Soda (opened), packed for GWR by Boots Nottingham & BR(W) adhesive plaster reel. No lid. (2 items).
- 392 Misc lot includes Mug "Exeter St. Davids, 1994, 150 years & Matchbox van "Kellogs"
& BRB Thermometer, a dinner fork, Bristol Taxi registration plate, LNWR pay tin,
GWR keys and hinges and a Brush alloy plate from D7027 poor condition. All held in a leather
guards bag which needs restoring.
- 393 GWR First Aid Equipment No.2 Card (5/34) & First Aid booklet 2d.
- 394 GWR 66ft Tape measure (needs attention).
- 395 Bus Destination roller blind, mostly Lancashire locations.
- 396 3 x Engineman's Billy cans.
- 397 A GWR desk stationary tidy (tinplate).
- 398 A GWR ticket cabinet, with working roller blind and locking hinge bracket. (ex Lawrence Hill.
- 399 GWR Engineers Dia holder and Dia
- 400 3 Red ESSO oil cans, as used on garage forecourts, 1 gallon each, quart and litre.

TOLLGATE HIRE

Car, Van & Truck Rental

High Street, Hanham,
Bristol, BS15 3HF

Tel: 0117 960 4992

Fax: 0117 935 3276

www.tollgatehire.co.uk

DIRECTIONS TO VENUE

From Bristol Parkway (on foot) - Turn left onto Hatchet Rd, Continue onto Brierly Furlong, At the roundabout take the 1st exit onto New Rd, Turn right into venue.

From M4 (by car) – Leave M4 at Junction 19 towards M32, Merge onto M32 (signs for Kingswood/Filton/Ring Rd/A4174/Bristol/Fishponds/Horfield), At junction 1, take the A4174 exit to Ring Rd, At the roundabout, take the 3rd exit onto Avon Ring Rd/A4174 heading to Filton, Continue to follow A4174, At the roundabout, take the 4th exit onto Great Stoke Way, At Fox Den Rd, take the 1st exit onto Fox Den Rd, At the roundabout, take the 1st exit onto New Rd, Turn right into venue.

