

BRISTOL RAILWAYANA AUCTIONS

CATALOGUE OF AUCTION LOTS

7th APRIL 2019

10am to 4pm, (Auction Commences 11.00am, Viewing from 10am)



**ABBAYWOOD COMMUNITY SCHOOL,
FILTON, BRISTOL. BS34 8SF.**

WWW.BRISTOLRAILWAYANA.CO.UK

TERMS & CONDITIONS OF SALE

1. BIDDING

If you intend to bid, please register your name and address at the Cashiers Desk before the sale commences and obtain a Bidding Number. Please do not deface or fold these numbers and return the number to the cashiers at the end of the auction. All bids made shall be treated as offers made upon these conditions of sale.

The Buyer will be the person making the highest acceptable bid to the Auctioneer at the fall of the hammer.

2. AUCTIONEERS DISCRETION

In the case of any dispute, the Auctioneer has the full right of settlement. The Auctioneer may:

- Refuse any bid.
- Advance bidding as they see fit.
- In the event of a dispute of Buyer at the fall of the hammer choose to immediately re-sell the lot.
- Withdraw, divide or combine any lots with another or others.
- Exclude any person from the auction room.

3. RESERVES

Lots put up for sale are subject to any reserve price imposed by the Seller. The Auctioneer may bid on behalf of the Seller up to the amount of the reserve. The Seller shall not personally or through an agent bid on any of his own lots

4. PAYMENT

May be made by cash or cheque (with a valid cheque guarantee card) up to any amount. Cheques over the cheque card limit will be accepted, but items purchased will be held pending clearance of the cheque, arrangement for the collection of items can be made once clearance of the cheque has been confirmed.

5. POSTAL/COMMISSION BIDS

We actively encourage postal bids from those unable to attend the Auction personally. Postal bids are accepted free of charge, but must be submitted in writing/e-mail using the form in this catalogue or from the website. Postal bids will only be placed if the company are holding appropriate payment details prior to commencement of the Auction. Lots will be bought at one step above the highest bid in the room, subject to the maximum amount stated and any reserve that may apply. We do not accept postal bids on the day of the auction.

6. REMOVAL/STORAGE OF LOTS

Successful purchases can be paid for and removed at any time during the sale, but preferably during the interval or at the end of the auction, subject to payment conditions being met (see 3 below). The Auctioneer will at the request of the Buyer store larger items at its premises for up to one month at the Buyers risk. Collection will be by prior arrangement only. Items can be delivered at cost.

FRONT COVER: 8F 48706 leaving Bath Green Park with one of its last passenger trains by C Steane.

7. DESCRIPTION OF LOTS

The catalogue description of lots, in most cases, has been supplied by the vendor. (Many lots will be unseen until the day of the sale!) We therefore cannot be held responsible for errors in description, condition, authenticity or defects.

8. INSPECTION

Ample opportunity is given for inspection of lots and each purchaser by making a bid acknowledges that he/she has satisfied themselves as to the condition of lots and the Terms & Conditions of Sale. Customers are reminded that certain lots may be fragile due to age, wear etc. When handling and viewing such material they are asked to treat items with the utmost care and attention. We will expect any damage to be made good at an amount agreed with the Auctioneer.

9. FORGERIES

Notwithstanding conditions 7 & 8, if the Auctioneer receives notice in writing from the Buyer within 7 days of the sale that in the Buyers opinion a lot is a forgery, and on giving such notification the lot in question is returned to the Auctioneer in the same condition as that at the time of the sale, then if, on considering such evidence as the Buyer supplies to prove the Buyers assertion, the Auctioneer (or an mutually agreed Expert) decides that the lot is a forgery the sale of the lot will be rescinded and the purchase price repaid to the Buyer.

10. LIABILITY OF THE AUCTIONEER

All persons attending a Sale under the conduct of the Auctioneer shall be deemed to be on the land and premises at their own risk and shall have no claim against the Auctioneer in respect of cancellation/postponement of a sale or any loss, accident or injury, however occasioned.

NOTE

Many lots are of such a nature or age that precludes their being in pristine condition. Some catalogue descriptions may refer to damage or restoration that has been done. However, omission of any such reference does not imply that a lot is free from defects nor does the reference to any defect imply the absence of others.

- 1 2 original ink line drawings of locomotives. a) Great Central Railway 1929 Robinson B3 4-6-0, 1169 "Lord Farrington", M Summers. b) Furness Railway 192/21 "4-6-4 115 Class Kitson Tank" signed MW Summers 14.12.21.
- 2 Unusual Photographs of Bristol Barrow Road. Totalling 17. Taken by deceased Solicitor Simon Logi. 1) Locos under Coaling Stage Bristol Barrow Road - 82040 etc 0-6-0 Locos Bristol Barrow Road . 2) Loco Fitters at Barrow Road locos adjacent. 3) Locos Lined up in Barrow Road Bristol Mainly LM locos 48177 in scene. 4) Locos Lined up in steam at Barrow Road - Driver about to board. 5) 44763 of 5A - 47557 of 82F and 82035 on shed at Barrow Road. 6) Turntable at Barrow Road with Ivatt tank plus Midland 4F. 7) Turntable at Barrow Road 43444 plus 73xxx std and 63xx class loco. 8) Locos 47557 of 82F and 3720 of 82G on Barrow Road. 9) Bristol Barrow Road Smokie scene with locos in the midst. 10) Fireman walking adjacent 4-6-0 Black 5. 11&12) 0-6-0 44135 receiving attention on the footplate - Barrow Road (2). 13) Diesel Re-Fuelling point location unknown St Phillips Marsh? 14) Railwaymen on platform approaching Bristol Bath Road Diesel depot. 15) 3752 Pannier with Fireman ready with Firing shovel - Barrow Road.
- 3 Unusual Photographs of Paddington Station Totalling 10 all circa 1962. Taken by deceased solicitor Simon Logi. 1) 6029 Fireman circa 1962. 2) Paddington entrance with Barclays Stout sign. 3) Footplateman with Handlamp night scene. 4) Boy spotters on luggage trolley watching King class loco. 5) Portrait of Driver and Fireman on loco. 6) 6001 King Edward VII departing Paddington with DMU getting an external brushing. 7) Paddington Station Scene with Wymans newspaper stand platform 4. 8) Paddington Station Scene with Baggage sack truck platform 5. 9) Paddington Station Suburban Signalbox night scene . 10) King class leaving Paddington on Birmingham train - LT Red district line set on left plus DMU.
- 4 BR(S) Poster Timetable Saturdays for London, Worthing, Littlehampton, Bognor Regis and Portsmouth for connections to the Isle of Wight also including Hayling Island branch 17th Sept 1960 - 10th June 1961.
- 5 GWR, Churchward Saint Class Replica Nameplate "SAINT SEBASTION". D/S with "LALLA ROOKE".
- 6 GWR Serving Plate.
- 7 Cast Iron Signal Finial.
- 8 BR(W) enamel sign "BEWARE OF THE TRAINS".
- 9 3 x large modern station running in boards inc. MANCHESTER VICTORIA.

- 10 British Rail (Double Arrows) large pillow case from Sleeping Cars.
- 11 Lot of 17 miscellaneous Railway books. Varied assortment.
- 12 Railway 'Metrohm' ammeter – not marked.
- 13 British Rail (Double Arrows) Blue carried document wallet (which was available for purchase at booking offices).
- 14 Lot of 18 Railway books – varied assortment.
- 15 Southern Railway (Eastleigh) Wagon plate 1392.
- 16 Two British Rail posters: 1. British Rail Timetables 17th May to 3rd Oct 1993 available from British Rail Stations; 2. Inter City for free Intercity travel Train Tickets stop at one of these stations – with Shell sign, 1993.
- 17 Great Western Railway 8 day clock. Wooden body marked inside GWR 0.674. Needs attention as it is currently not working.
- 18 Two British Rail posters: 1. GWR150 Old Oak Common Open Day 15th Sept 1985; 2. BR Engineering Eastleigh Works Open Day Sunday 12th October 1986.
- 19 Box of 00 scale rolling stock, all boxed.
- 20 Box of model buses and road vehicles.
- 21 BR(WR) Service Timetable, section 4 – Bristol, Summer 1948.
- 22 BR(WR) Working Timetable Bristol, passengers, summer 1959 and working timetable for freight, summer 1961.
- 23 Bound GWR magazine for 1916 in official binding.
- 24 Bound GWR magazine for 1930 in official binding.
- 25 Bound GWR magazine for 1931 in official binding.
- 26 GWR poster, train departures from Snow Hill 1930's, in need of attention.

- 27 Approx 100 Southern Railway luggage labels.
- 28 Approx 100 GWR luggage labels.
- 29 Approx 100 black and white photographs of GWR subjects.
- 30 Similar to lot 29.
- 31 GWR square based signal finial.
- 32 Lot of railway/bus badges, buttons and paychecks.
- 33 Approx 100 railway colour slides including GWR.
- 34 Large brass tap and hose fitting stamped GWR.
- 35 BR Tail lamp complete.
- 36 GWR regulations and timetable poster for services to West Wales 1958.
- 37 Original 1930's Bovril poster.
- 38 Thames Valley Bus sign plus two other enamel signs.
- 39 Private locomotive movement sign.
- 40 EMU Alloy Dimensions Plate.
- 41 P&W MacLellan Ltd, Clutha Works, Glasgow, Wagon Builders Plate (unrestored).
- 42 Standard Railway Wagon Company (Stockport) 1959 Builders Plate.
- 43 Loco Smokebox Door S.C. (Self-Cleaning) Plate.
- 44 64D (Carstairs 1949-1960) Shedplate.
- 45 Bus Wayfarer Ticket Machine from the Swansea / Neath area. Not known if it is in working order.
- 46 One sided enamel sign Bristol (in the Bristol scrip style) Omnibus Stops here if required.

- 47 Station Waiting Room print, framed and glazed. Thought to be part of the poster of Devon by Gregory Brown (1887 – 1941). Frame not marked but believed GWR.
- 48 British Rail Station Nameboard 'Bristol Parkway' modern design but pre-privatisation. 7ft (approx.) long.
- 49 Minehead reproduction poster.
- 50 London Midland Main Lines & Connecting Lines Mirror.
- 51 Assorted posters, maps and timetables.
- 52 DMU Blind. Destinations noted include: Excursion, Special, Aylesbury, Abingdon, Basingstoke, Banbury (General), Didcot, Ealing Broadway, Fairford, Henley on Thames, Hungerford.
- 53 Almex ticket machine in its carrying case, with BR ticket rolls.
- 54 2 new BR shirts (still in their wrappers) striped with 16 & 16.5 inch collars.
- 55 GWR jigsaw (boxed) St. Davids Cathedral & 2 other jigsaws.
- 56 Box of Ephemera/ paperwork includes Carriage Stickers, Tuck bags, and boxed Matchbox trains.
- 57 Pack of paperwork all official issue. Mostly GWR but TVR, Rhondda & Swansea bay. Shropshire & Montgomery and Worcester & Aberystwyth noted.
- 58 3 Enginemans jackets 2 have GWR badges.
- 59 2 GWR blankets. One in need of heavy general repair.
- 60 Box of mixed items, Hand stamps, Roll tickets and BTC toilet roll noted.
- 61 Sealink poster (1979) to Guernsey & Jersey & 2 small commercial ads posters.
- 62 Stone ware jar marked Great Western Railway, possibly an ink bottle.
- 63 Box of paperwork, pre-grouping to BR. Worth a delve!
- 64 Silver plated cruet holder marked GWR. No condiments.

- 65 Pair of canvas leggings marked GWR, most unusual.
- 66 Collection of books relating to railways in the West Country, a good mix.
- 67 LMS metal first aid box. No contents.
- 68 Small collection of official publications.
- 69 Chisel marked L&SWR and a glass cutter also marked L&SWR. Very unusual items.
- 70 Box of mixed railway books.
- 71 Galvanised watering can incised LNER.
- 72 Original artwork by Cyril Freeze for a Southern Railway poster.
- 73 Brass Hudswell-Clarke builders plate thought to be off a narrow gauge mining loco.
- 74 Small New York central R.R. timetable for 1863, right in the middle of the American civil war!
- 75 Brass plate 'John Mills, railway foundry, Llanidroes' origin unknown.
- 76 Box of OS maps from 1906 up to the 1970's, ideal for reference work. Some 49 maps in total.
- 77 Two BR(E) 66 foot tape measures.
- 78 Five items of Royal Scott paperwork. The track of the Royal Scott, blue folding timetable, the Triumph of the Royal Scott, a gummed label for the Royal Scott(rare) plus a 1953 railway magazine with a photo of the Royal Scott on the cover, nice collection.
- 79 Four pieces of silver plate, LMS ,GWR, LNWR.
- 80 LNER hallmarked silver medal for bowling 1939.
- 81 Book, 'the story of the Cambrian' by Gaquoine 1922.
- 82 Cast Iron British Transport sign 'Buried Cables'.
- 83 Four books on the Canadian Pacific and one Canadian government railways, all thought to be pre WW1.

- 84 Box of hardware, flare lamps etc.
- 85 Book - Tomlinson's North Eastern railway.
- 86 Three books Vol. 1,2 and 3 'Great Central' by George Dow.
- 87 Galvanised water carrier embossed BR.
- 88 Box of railway reference books, good selection.
- 89 Southern Railway signalling certificate and an exploded view of a steam loco from Gresham publishing.
- 90 Diesel multiple unit headcode box, includes blind.
- 91 Smokebox plate, 6615, BR/GWR Collett 0-6-2T.
- 92 Peckett & Sons Worksplate (Replica), 936, 1902, Bristol.
- 93 Book of scale drawings showing modern image locomotive classes, hard to find and out of print.
- 94 Book "The Engine Drivers Manual" by Brian Topping, details everything from preparing the locomotive to firing and driving it. Hard to find.
- 95 Gen'ly Repaired/Re-bodied Shildon 6003, 1234-1979.
- 96 LMS 492404 "D" Plate, 21T.
- 97 A bundle of 7 BR Modern Image Posters
- 98 A bundle of 7 BR Modern Image Posters
- 99 A bundle of 7 BR Modern Image Posters
- 100 14 Signal Box Registers from STANDISH JUNCTION SB (Lancs) dates between 26/02/1965 and 04/08/1972 with some gaps. Closure is official recorded elsewhere as 05/10/1971. Includes one register from ORWELL WEST SB 06/12/1965 to 14/03/1966.

- 101 Signalmans own locally made reminder panel from STANDISH JCN (Lancs) marked UP/DOWN WHELLEY (Lancs). Closed 05/10/1971.

- 102 USA made REGULATOR Clock. Drop case in working order. Needs a brass bezzel and glass. Made by "Ansonia" Clock Co. New York.

- 103 Signal Box Stool.

- 104 AWS Enamel Diamond.

- 105 GWR Cast Iron Cover, GAS OIL.

- 106 GWR Cast Iron Cover, WATER.

- 107 GWR Cast Iron Cover, WATER.

- 108 Glasses for Signal Arm Specticle Plate.

- 109 Similar to lot 108.

- 110 BR Inspectors Cap with BR Double Arrow Badge.

- 111 RCTS Books. Locomotives of the GWR, Vol 1, 5, 6, 7, 8, 9 & 11. All are first editions except #11.

- 112 A box of S&T odds and ends.

- 113 GWR small wooden cased Lineman's Galvanometer. GREAT WESTERN RAILWAY in full on face. Also mentions being made at the GWR S&T works at Reading. probably the nicest we have seen.

- 114 GWR over 100 different G77 Luggage Labels inc coloured examples.

- 115 100 Luggage Labels mix of LSWR/SR/BR(S).

- 116 Limited Edition Print "Black Five at Bitton" by Ian Cryer. Framed & Glazed.

- 117 Restored Cobblers Last, used by Signalsman locally who did shoe repairs in the box in quiet periods of working. Jacko No1 by Cannon & Co.

- 118 A box of Bradshaws/ABS and other Timetables.

- 119 Southern Railway Sales Catalogue from a clearance sale March 1938. Everything you can imagine from Gloves to a Diamond Crossing from Light Rly (could be L&B), and Motor and Pushbikes.
- 120 Children's KIDDY Ride "BLUEBELL" No 847531 WBR. Ideal for garden use. The motor assembly has been removed. (Heavy) Collection from an address in South Gloucestershire.
- 121 GWR cloth bag for towels issued "FOR THE CONVENIENCE OF PASSENGERS".
- 122 SOMERSET & DORSET RLY. JOINT LINE Pocket Timetable from Sept 24th 1928. Printed on heavy craft paper.
- 123 Booklet (1929) RAILWAY CONTROL BY RAILWAY STOCKHOLDERS (Not - Directors) by G.A. Nokes. Superb Reading. How the railways are run for the benefit of the Directors.
- 124 Southern Rly Pocket Timetable. July 1924 all the branches mentioned, including the Lynton & Barnstaple. Slight cover damage.
- 125 Southern Rly (Eastleigh) marked S(E)R large door key on fob marked "Clock House".
- 126 Tea plate & Teacup & Saucer marked "EGLWYS-SEION" MAERDY from a Seion Chaple in Maerdy (Rhondda) South Wales built in 1882. Well used by railwaymen.
- 127 2 Booklets. "Locomotives of the Southern Rly (Eastern Section)" 1928 and "Locomotives of the L.B & S.C Rly) 1923.
- 128 A folder of USA & Canada Maps and Pocket Timetables from trains and busses 1947-50s. Masses of information.
- 129 LMSR locomotive reference book (issued 1947) showing shed codes etc. This was published by the British Locomotive Society. Some underlining in pencil. Forerunner of the popular ABC Locoshed book.
- 130 Modern Image items "FIRST GREAT WESTERN" staff issue desk calender and 2 different train formation reminders (upto 10 vehicles) VGC. Something for the future!
- 131 "THE RESHAPING OF BRITISH RAILWAYS" (Beeching Report, Part 1 & 2, Pub 1963 with original sleeve. Shows all of the stations/lines marked for closure.
- 132 Somerset & Dorset Rly Track Chair 1896, four hole, unrestored.

- 133 A box of Working Timetables and Public Timetables.
- 134 Drivers Control Handle from EMU.
- 135 BR binder/file. Instruction relating to "Passenger Facilities" 1958/64.
- 136 3 small card notices regarding engine sheds. The Railway Executive (1950s) "Coaling Stages", "Route Knowledge of Drivers", "Ash Lifting Plants". Don't miss these!
- 137 Small early 19th century Omnibus token. "JOHN GREENWOOD" Manchester 3d. In 1824 John Greenwood, the keeper of a toll gate at Pendleton on the Manchester to Liverpool turnpike purchased a horse and cart with several seats. Thus began what was probably the first Omnibus service in the country. Marked 3d for a seat inside the Omnibus. The token has all of these details marked on the reverse.
- 138 UP & OVER AT MIDFORD. Limited edition print by Alan Ward. Framed & glazed.
- 139 BATH GREEN PARK, MIDLAND STATION FOR THE S&D. Limited edition print by Alan Ward. Framed & glazed.
- 140 PREPARING THE LAST PINES AT BATH GREEN PARK. Limited edition print by Alan Ward. Framed & glazed.
- 141 2 Tilley Lamps, one marked British Railways.
- 142 Totem Sign lamp post brackets.
- 143 Adlake Signal Lamp interior. New/old condition, unused.
- 144 Booklet. Diamond Jubilee of the CALEDONIAN STEAM PACKET CO Ltd, pub 1949. Good condition, masses of information.
- 145 Booklet. EAGLE (comic) book of Records & Champions, pub 1951. VGC. Lots of railway and transport interest.
- 146 MODEL RAILWAYS & LOCOMOTIVES. 8 bound volumes from volume 1 (1909) until volume 10 (1918). Very sought after by collectors. Plus one bound volume of Model Engineer 1940.

- 147 THE MODEL ENGINEER & ELECTRICIAN. 4 bound volumes starting from volume 1 (1898) to volume 16 (1907) with gaps.
- 148 Ian Allen Publications. BRITISH TRAINS 1952. TRAINS OF BRITAIN 1951 and TRAINS ANNUAL 1951 (3 items).
- 149 TRAINS ILLUSTRATED magazines. Full years in VGC 1950/51/52 and extras.
- 150 A folder of GWR paperwork.
- 151 A box of model railway items.
- 152 Railway Executive. "INSTRUCTIONS FOR STATION NAME & DIRECTION SIGNS" inc Totems and Door plates, full sizes also shown. A must if you collect enamels. Marked Drawing Office Copy.
- 153 Southern Railway Handbills. "NAVAL REVIEW AT SPITHEAD" July 1924 and "PORTSMOUTH NAVY WEEK" July 1933. 2 items.
- 154 GWR large size Carriage Map (unframed) and Henry Greenlys diagram for GWR Saddle Tank Gauge 1. 2 items.
- 155 LNER Rule Book 1933 & LNER "The Steam Locomotives Its Failures" 1927 and four different LNER Wrong Line Order card (Oct 1932) A. B. C and D noted.
- 156 London Transport Publication "ART FOR ALL" 1949. The story of LT posters from 1908 to 1949. 68 plates. Slight fading to the dust cover. Very sought after publication.
- 157 2 Luggage Label Publications by the "Railway Print Society" PRE GROUPING LUGGAGE LABELS" and " "LUGGAGE LABELS OF IRELAND". No longer available.
- 158 Maritime door return spring assembly from White Funnel Fleets (P & A Campbells) offices in Hotwells, Bristol Owners of Bristol Channel Paddle Steamers.
- 159 RAILWAY MAGAZINE official bound years 1960/61/62/63. VGC.
- 160 2 Official Publications. GWR "Lookout" - Permanent Way Men (July 1936). Rubber stamped "Permanent Way Inspector ABERSYCHON 1936" and BR(BTC) 1955 Trimming and Lighting of Oil Lamps. (2 items)

- 161 An album of 35mm black/white negatives with descriptions recorded. End of steam and early diesels, Bristol area noted. Some personal shots included on strips which can be removed/discarded. Sold with copyright.
- 162 A collection of Cigarette Cards "Merchant Ships of the World" issued 1924 by the Imperial Tobacco Co. approx 5 missing from the set.
- 163 Railway pen nibs, a good selection including LNER, BR (inc regionals), RCH, NER, GNR and SR. A selection of different types available for most of the companies, also includes some boxed and loose commercial issues, ideal for starting your own pen nib collection.
- 164 A small collection of old loose railway maps. Mostly from handbooks and guides, some suitable for framing.
- 165 A good quantity of BR pocket size timetables from the 1970/80s all regions noted including HST intros.
- 166 A box of BR public timetables.
- 167 2 x BR(W) cast iron Signal Arm Stops (marked).
- 168 Signalling hardware. BR round Signal Post bracket fitting.
- 169 Signalling hardware. 2 x cast iron Signalling compensator arms, one chains attached.
- 170 Signalling hardware. Single standard wire or chain wheel and pedestal (marked BR/W D28).
- 171 Signalling hardware. Similar to lot 170 (marked SR T.H &S).
- 172 Signalling hardware. Double standard wire or chain wheel and pedestal (marked SM118 & BR(S)).
- 173 Signalling hardware. Point rodding/wire adjusting screw assembly.
- 174 Signalling hardware. Signal wire adjusting screw assembly.
- 175 Signalling hardware. A roll of galvanised Signal wire.

PAGE LEFT BLANK FOR YOUR NOTES:



5



6



8



9

17



40



41



42



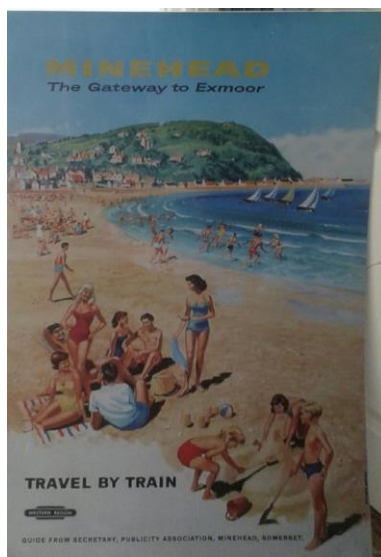
43



44



101



49

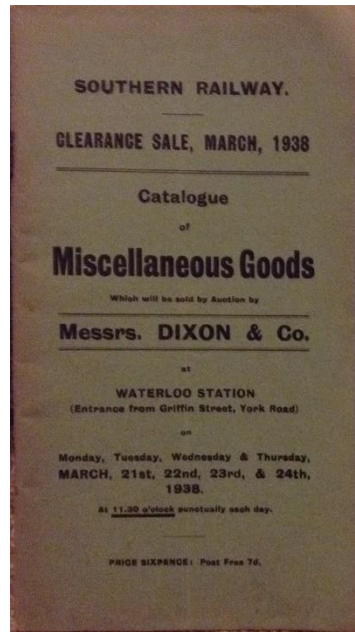


52

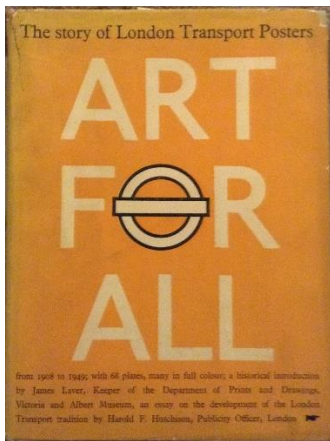
113



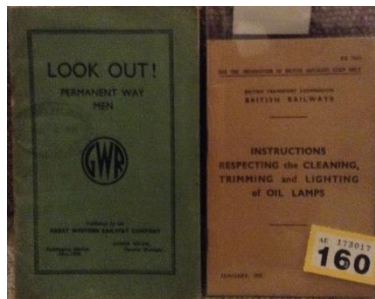
119



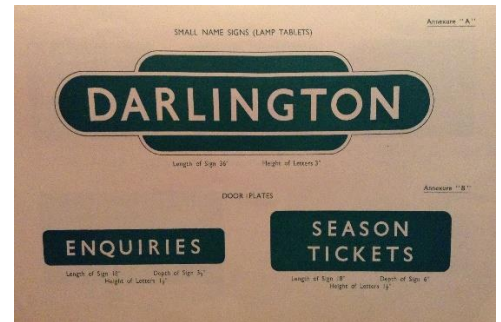
120



156



160



152



208



209



153



211



212



210

240



241



242





243



244



258



259



260



261



262



269



270



271



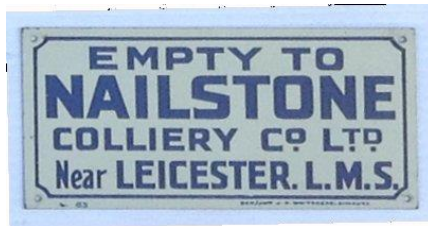
277



278



279



280



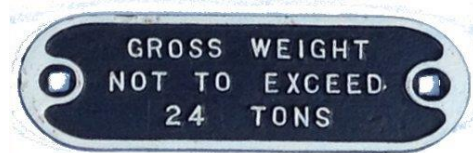
281



282



283



284



285



292



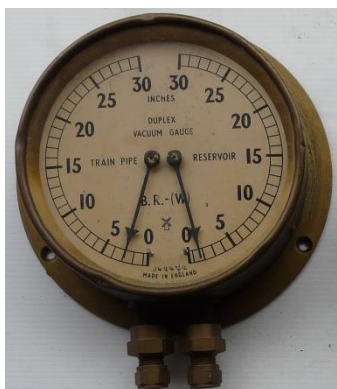
293



295



300



296



298



302



303



304



305



306



308



309



310



311



312



313



314



316



317



318



321



322



323



324



330



327



326



328

329



333



340



341



342



343



344

PAGE LEFT BLANK FOR YOUR NOTES:

- 176 Signalling hardware. GWR type wooden post signal "Blinker" plate number G171. BR/W. slight wasting on plate, easily filled.
- 177 Signalling hardware. GWR (marked) signal balance weight. GWR 20 G91.
- 178 Signalling hardware. Signal post balance operating lever.
- 179 6 Famous Trains jigsaws showing UK postage stamps and 2 others (unused). (8 items)
- 180 A collection of boxed model buses.
- 181 A box of railway books.
- 182 Wooden Coat Hanger marked BT (British Transport) Hotels.
- 183 4 letters from Motive Power Superintendent at Swindon (1951) concerning public visits to Swindon Factory (works) and MPD. Envelope stamps have BR pin marks.
- 184 2 BR Shed permits (1953) BR(S) for STEWARTS LANE & BRICKLAYERS ARMS (Permit is for one person) and BR(S) NEWPORT (I-o-W) & RYDE (I-o-W) 1953 (four persons). It was very unusual for these passes to be granted to one person as BR preferred visits by organised parties. Good condition.
- 185 4 BR Shed permits (1957) BR/SCR for INVERNESS, HELENSBURGH, BALLOCH and YORKER (3 persons). Again, made out to an individual with his hotel bills included for Aberdeen, Oban and Barrow. Good condition.
- 186 BR(S) Photographic Permit for S&DJR line between BATH & BOURNEMOUTH Sept/Dec 1956. What a lovely time to be photographing the gems still working the S&D.
- 187 A collection of books relating to the S&DJR.
- 188 A collection of black/white negatives plus the necessary note books for date/place records. This is a unique & interesting personal record of train spotting trips by a very serious BATH railway enthusiast, late 1940s until early 1960s. Complete with log books of locos spotted & photographed. S&DJR noted as this would have been his local line. Trips to Scotland and most other BR regions included. A very good standard of photography included with a large quantity of 120/127 size negs from the 1950s. Don't miss this lot which really pictures the sunset of British team.

- 189 A box of railway souvenir match boxes (some complete).
- 190 3 BR/LMR works visit brochures. CREWE WORKS (1952), DERBY WORKS (1952) and STRATFORD LOCO & CARRIAGE WORKS (1955).
- 191 British Railways 18" Boxwood Office Ruler, marker BR1480/1, very good condition.
- 192 A pack of railway tickets, bus tickets, and luggage labels.
- 193 ABC Ian Allen, 2 Shed Code books May & October 1951. Neat underlining in faint pencil which can easily be removed.
- 194 ABC Ian Allen, 7 different pictorial publications from late 1940s early 1950s.
- 195 Similar to lot 194.
- 196 A period box of Geo.W. Hughes bank pen nibs.
- 197 2 period boxes of pen nibs. Thomas Bower & Sons and Terry & Co. contains some railway official, LMS, GNR and BR(W) noted.
- 198 A box of Railway Ephemera, worth a look.
- 199 GWR Centenary Issue of the Railway Gazette (1935) masses on the GW including the "new" Flying Banana and superb ads.
- 200 LNER photograph of the V2 4844 COLDSTREAMER being named at Kings Cross 20.6.1939 by Major General Sir Cecil Pereira KCB CMG. Later renumbered 60873. Scrapped in 1962. Framed.
- 201 9 Eagle Comic central page cut away drawings (all 1955/60) inc Diesel Rail Bus, class 40, and BR(W) Warship. Also some interesting 1950s RN Ships. Very suitable for framing.
- 202 A selection of London Transport information pocket size handbooks, mostly 1960.
- 203 5 copies of J.H. Russels PICTORIAL RECORD OF GWR LOCOMOTIVES, 2 x Vol 1, 1 x Vol 2, 1 x Absorbed Engines, and 1 x Combined Vol 1 & 2.
- 204 4 Railway china pictorial wall plates. GW King at Sidney Gardens, Bath noted.

- 205 A selection of BR Supplements to the working timetables. All 1950/60s and before the end of steam.
- 206 A pair of guards flags with wooden handles.
- 207 A quantity of BR Diesel Drivers Dust/Warehouse type jackets. New/old condition. Several have BR Buttons.
- 208 North Eastern Railway "To carry 7 tons" Wagon Plate.
- 209 LMSA Star Plate 103346, 1931.
- 210 Very Old "7T" Wagon Plate (North Eastern Railway)
- 211 Alloy "Re-bodied" Wagon Repair Plate, Swindon 1975.
- 212 Octagonal "Inter Repair Lifted 1973" Wagon Repair Plate.
- 213 Box of Railway books.
- 214 Similar to lot 213.
- 215 26 Engine record cards for BR/WR Locomotives. As marked.
- 216 GWR small can. Nicely marked with brass plate - GWR Swindon.
- 217 Part of valve gear for 9650.
- 218 Great Western Echo Autumn 1996 to Spring 2018 less 208 and 168.
- 219 Bound set of the Railway World magazine 1961 to 1992 (49 volumes).
- 220 Box of individual copies of the Locomotive Railway Carriage & Wagon Review.
- 221 Great Central Railway China plate. Blue bordered gold leaf pattern. Marked with the GCR crest and Grimsby. The face is cracked but this does not altogether detract from a very rare and desirable item.
- 222 Small Carriage Board BR -Oswestry/Llanfyllin, maroon with straw lettering ex service condition. Rare, the branch ran as 2 carriage train, closed 1965.

- 223 BR 1970s plastic Inter City carriage board inserted into window slot on Mk2 coaches, Preston stns via Dumfries to Glasgow.
- 224 Sundry lot all sorts of odds and ends.
- 225 Photos steam postcard size all sorts of classes, A1, 2, 3, 4s ECML LNER LYR noted.
- 226 RCH handbook of stations and related publications.
- 227 Book - GWR Atlas by R.A. Cooke. Wild Swan.
- 228 Selection of BR Tickets all types and ages.
- 229 Box Passenger TTs, some Ian Allan repros.
- 230 Box BR Working TTs.
- 231 Train Register Book unused.
- 232 Box River & Canals books.
- 233 Box Railway Books.
- 234 Similar to lot 233.
- 235 Box of Maps - OS, town mixed.
- 236 Box Railway Books.
- 237 Similar to lot 236.
- 238 Similar to lot 237.
- 239 Similar to lot 238.
- 240 Marcroft Stoke Wagon Plate 972389.
- 241 "Head Wrightson Engineers 1946" Wagon Plate.
- 242 Tank shaped Metro-Cammell 1968 Wagon Plate.

- 243 Cambrian Wagon and Engineering Company Builders Plate.
- 244 Wagon Repairs Gloucester "Repairs Advise" Plate.
- 245 Railway Paperwork all sorts and ages BR, Post grouping.
- 246 Sundry lot incls some Western region special traffic notices.
- 247 Signalling Notices and other operations publications.
- 248 Box of GWR official Publications varying condition and Photos of Western Region locos, scenes.
- 249 Solid brass plate "Steambloc".
- 250 Small Cast Iron plate "1/2".
- 251 LNWR Cast Iron Fire Hydrant plate from Wolverton Works 32002 FH 13ft.
- 252 Similar to lot 251, except D18. 4in SV 33ft.
- 253 BR(W) oblong wagon plate, 336, 1958.
- 254 Set of 7 commemorative China plates of Locomotives.
- 255 Box of Books.
- 256 Ticket dating machine. Not complete.
- 257 Similar to lot 256.
- 258 D plate, B460505, 13tons, Ashford 1955, Lot No 2430.
- 259 D plate, B424710, 21 tons, Glos C&W 1957, Lot No 3032.
- 260 D Plate, B733132, 22 tons, Darlington 1959, Lot No 3226.
- 261 D Plate, B917986, 13 tons, Shildon 1957, Lot No 3006.
- 262 Framed and glazed cigarette card collection.

- 263 LNER Best kept Station 1927, Third Prize Thorp Arch.
- 264 Set of 6 commemorative china plates of Locomotives.
- 265 Solid brass plate from dispatch bag. Divisional Pay Roll Office Bristol/District Engineer, Gloucester on reverse.
- 266 Small Cast Iron unrestored sign, "For repairs return to Line Shops York".
- 267 Brass plate, Cochrane Co Annan Ltd, Scotland, Boiler No 14767, 1940.
- 268 Cast Iron sign (German) "Deutsche Reichsbahn".
- 269 Framed & Glazed. GWR Pilotman cloth armband.
- 270 Drop case wall clock.
- 271 Similar to lot 270.
- 272 Adlake Signal Lamp, plated LMS (no interior).
- 273 GWR wooden cased Signal lamp indicator, Brass plate 1-3-5, 29.
- 274 BR(M) 3 aspect handlamp complete.
- 275 Two handlamps, one only suitable for spares.
- 276 3 aspect handlamp.
- 277 D plate, E 308196, 21 tons 1948.
- 278 Alloy D plate, B782975 12tons, Wolverton 1961, Lot No 3391.
- 279 D plate, B426423 21 tons, Hurst Nelson 1957, Lot No 3035.
- 280 Tinplate Wagon Destination Label "Empty to Nailstone Colliery Co".
- 281 Oval "Owner MOT 1948 No. 35206" Wagon Plate.
- 282 1898 N.E.R. "To Carry 10.5 Tons" Wagon Plate.

- 283 BR Southern Region "Gen'ly Repaired" Plate.
- 284 GWR "Gross Weight not to Exceed 24 Tons" Wagon Plate.
- 285 Pair of C/I plates carriage. 30 tons 60ft 0ins x 9ft 3ins & W X Q.
- 286 LNER Signal Lamp interior.
- 287 Small square inspection lamp stamped M-B-W.
- 288 SR 4 aspect Fogmans lamp. No glasses, interior not normal type.
- 289 LNER fogmans lamp, lens cracked amd two glasses missing.
- 290 LMS handlamp, no burner, has BR(M) top.
- 291 White square taillamp.
- 292 Brass steam gauge BR(M) 0-100.
- 293 BR Standard brass pressure gauge 0-120.
- 294 GWR Galvanometer with red metal case, marked GWR Reading.
- 295 French brass pressure gauge, Steam reservoir 0-76.
- 296 Brass pressure gauge Train pipe reservoir BR(W) 0-30.
- 297 BR Handlamp 3 aspect, lens cracked.
- 298 Polished steel Ticket dating machine. Plated Edmundson complete with ribbon.
- 299 BR(S) square lamp interior.
- 300 Sign, No Smoking & No Naked lights.
- 301 Square white tail lamp.
- 302 Smokebox number plate 6672.

- 303 Totem sign SEAFORTH & LITHERLAND. Maroon . Face drilled for brackets.
- 304 GWR D plate 105773, no tonnage.
- 305 Poster board enamel plate "MAIDEN".
- 306 Alloy nameplate "St Rhadegund".
- 307 Silver Jubilee Repro poster.
- 308 Harrogate to Northallerton framed gradient board diagram.
- 309 Registration plate 88, 1952.
- 310 BR(E) "To Carry 5 Tons Distributed Load" Carriage/Van Plate.
- 311 Early BR(M) Wagon 'D@ Plate 732432.
- 312 GWR 1927 Wagon Registration Plate 10527.
- 313 LMS 1948 Wagon Registration Plate 168818 (Circular Lugless Version).
- 314 C.C. Crump & Co Wagon Builder's Plate 972405.
- 315 Large number of Sheffield Auction catalogues from the early Ian Wright days.
- 316 Registration plate 2503, 1958.
- 317 Original line drawing by Hamilton Ellis of Austrian State Rlys 2-6-0 @ Kufsten. Drawn in 1950s for his book "Famous Locomotives of the World" and given as a gift. Framed and Glazed. With full details recorded on the reverse. A unique opportunity to obtain a drawing from this celebrated Author/Artist. Very minor fixing noted.
- 318 Polish, PKP eagle in Alloy. Nicely restored.
- 319 LMS cast iron 4pint kettle, no lid.
- 320 LMS carbide lamp.
- 321 Framed carriage print. Furness Steam Gondola. Hamilton Ellis.

- 322 Framed carriage print. The Dee at Abergeldie. (sepia).
- 323 Framed carriage print. Glamis Castle, Angus (Lawson).
- 324 Small builders plate "Maybach" AD3674.
- 325 4 GWR/BR Official Instruction Publications.
- 326 Modern image alloy sign "Stop for Token".
- 327 Enamel sign Petroleum Spirit.
- 328 BR modern image direction arrow sign. EWELL EAST. Alloy.
- 329 S alloy plate 272 Lancing.
- 330 Flamecut from BR Class 31. 31 319. Built by BRUSH Traction, Loughbrough 23/08/1962.
Withdrawn 30/04/2007. Scrapped 07/06/2007 C F Booth, Rotherham.
- 331 Top half of LSWR cast iron boundary marker.
- 332 BR early crest on board "Lion over Wheel".
- 333 Cast iron "Shut this Gate".
- 334 Auction catalogue from the sale of the "Dinorwic Slate Quarries Rly (1969). Fascinating reading.
What a day that must have been if you had a few quid to spare, 4 steam locomotives inc
DOLBADARN @ £1050 and RED DAMSEL @ £1550 . Or you could have English/Welsh enamel
signs £7.00 for five. A superb read.
- 335 Signal box register from LAWTON JCN. April to May 1965 and a small collection of GWR.
and BR ephemera.
- 336 GWR booklet Standard Lifting Tackle Ins Aug 1928 along with canvas chart of tackle
types, Swindon, April 1910.
- 337 BR(WR) June 1960 programme of track relaying Shrewsbury District, diagrams for Dolgellau
and Bontnewydd.

- 338 Great Northern Railway. (England) pocket timetable fro 1897/88 Trains from London to East Anglia. Many closed branches.
- 339 A box of Railway books.
- 340 BR(M) Oblong 1966 Tanker Wagon, Double-Star Plate 187705.
- 341 "Generally Repaired by C.C. Crump & Co" Alloy Plate.
- 342 Butterley and Co. Ltd Codnor Park, dome shaped Builders Plate.
- 343 BR Eastleigh, Lot No 30327, 1956, Builders Plate.
- 344 BR 21T Wagon 'D' Plate (Head Wrightson, B426103).
- 345 A box of Railway books.
- 346 Road sign level crossing.
- 347 Modern road sign, level crossing.
- 348 Cart lamp.
- 349 Traction engine lamp.
- 350 Swindon produced KGV plaque.
- 351 A lot of miscellaneous cast iron plates.
- 352 GWR wooden cased lamp indicator.
- 353 GWR Handbills (2) - Pic-Nic - Pleasure Parties - Return Tickets from Mainline stations Dated Paddington May 1902 and A Day on the Lakes of Killarney for passengers by GW Railway Company dated 1910 and others (BR).
- 354 BR(W) Brass Signal box Shelf plate "LAVINGTON".

- 355 BR(W) Brass Signal box Shelf plate "WESTBURY NORTH".
- 356 BR(W) Brass Signal box Shelf plate "HAWKERIDGE JCN".
- 357 25 large B&W professional taken Phototographs of Class 47 diesel Locos circa 1960's - 70's with annotations of some locations.
- 358 29 large B&W professional taken photograhs of class 52 "Western" diesel hydraulic locomotives on trains in the London and South Devon locations.
- 359 30 large B&W professional taken Phototographs of Class 47 diesel Locos circa 1960's - 70's with annotations of some locations.
- 360 30 large B&W professionally taken photographs of GWR mainline tours and preserved railways, all taken in the 1970's at various locations.

TOLLGATE HIRE

Car, Van & Truck Rental

High Street, Hanham,
Bristol, BS15 3HF

Tel: 0117 960 4992

Fax: 0117 935 3276

www.tollgatehire.co.uk

DIRECTIONS TO VENUE

From Bristol Parkway (on foot) - Turn left onto Hatchet Rd, Continue onto Brierly Furlong, At the roundabout take the 1st exit onto New Rd, Turn right into venue.

From M4 (by car) – Leave M4 at Junction 19 towards M32, Merge onto M32 (signs for Kingswood/Filton/Ring Rd/A4174/Bristol/Fishponds/Horfield), At junction 1, take the A4174 exit to Ring Rd, At the roundabout, take the 3rd exit onto Avon Ring Rd/A4174 heading to Filton, Continue to follow A4174, At the roundabout, take the 4th exit onto Great Stoke Way, At Fox Den Rd, take the 1st exit onto Fox Den Rd, At the roundabout, take the 1st exit onto New Rd, Turn right into venue.

