

# BRISTOL RAILWAYANA AUCTIONS

## CATALOGUE OF AUCTION LOTS 6<sup>th</sup> OCTOBER 2019

10am to 4pm, (Auction Commences 11.00am, Viewing from 10am)



**ABBAYWOOD COMMUNITY SCHOOL,  
FILTON, BRISTOL. BS34 8SF.**

**[WWW.BRISTOLRAILWAYANA.CO.UK](http://WWW.BRISTOLRAILWAYANA.CO.UK)**

## **TERMS & CONDITIONS OF SALE**

### **1. BIDDING**

If you intend to bid, please register your name and address at the Cashiers Desk before the sale commences and obtain a Bidding Number. Please do not deface or fold these numbers and return the number to the cashiers at the end of the auction. All bids made shall be treated as offers made upon these conditions of sale.

The Buyer will be the person making the highest acceptable bid to the Auctioneer at the fall of the hammer.

### **2. AUCTIONEERS DISCRETION**

In the case of any dispute, the Auctioneer has the full right of settlement. The Auctioneer may:

- Refuse any bid.
- Advance bidding as they see fit.
- In the event of a dispute of Buyer at the fall of the hammer choose to immediately re-sell the lot.
- Withdraw, divide or combine any lots with another or others.
- Exclude any person from the auction room.

### **3. RESERVES**

Lots put up for sale are subject to any reserve price imposed by the Seller. The Auctioneer may bid on behalf of the Seller up to the amount of the reserve. The Seller shall not personally or through an agent bid on any of his own lots

### **4. PAYMENT**

May be made by cash or cheque (with a valid cheque guarantee card) up to any amount. Cheques over the cheque card limit will be accepted, but items purchased will be held pending clearance of the cheque, arrangement for the collection of items can be made once clearance of the cheque has been confirmed.

### **5. POSTAL/COMMISSION BIDS**

We actively encourage postal bids from those unable to attend the Auction personally. Postal bids are accepted free of charge, but must be submitted in writing/e-mail using the form in this catalogue or from the website. Postal bids will only be placed if the company are holding appropriate payment details prior to commencement of the Auction. Lots will be bought at one step above the highest bid in the room, subject to the maximum amount stated and any reserve that may apply. We do not accept postal bids on the day of the auction.

### **6. REMOVAL/STORAGE OF LOTS**

Successful purchases can be paid for and removed at any time during the sale, but preferably during the interval or at the end of the auction, subject to payment conditions being met (see 3 below). The Auctioneer will at the request of the Buyer store larger items at its premises for up to one month at the Buyers risk. Collection will be by prior arrangement only. Items can be delivered at cost.

FRONT COVER: 4P 40563 with an unidentified West Country leaving Bath Green Park with a passenger train, 1954 (Paul Baulch Collection).

## **7. DESCRIPTION OF LOTS**

The catalogue description of lots, in most cases, has been supplied by the vendor. (Many lots will be unseen until the day of the sale!) We therefore cannot be held responsible for errors in description, condition, authenticity or defects.

## **8. INSPECTION**

Ample opportunity is given for inspection of lots and each purchaser by making a bid acknowledges that he/she has satisfied themselves as to the condition of lots and the Terms & Conditions of Sale. Customers are reminded that certain lots may be fragile due to age, wear etc. When handling and viewing such material they are asked to treat items with the utmost care and attention. We will expect any damage to be made good at an amount agreed with the Auctioneer.

## **9. FORGERIES**

Notwithstanding conditions 7 & 8, if the Auctioneer receives notice in writing from the Buyer within 7 days of the sale that in the Buyers opinion a lot is a forgery, and on giving such notification the lot in question is returned to the Auctioneer in the same condition as that at the time of the sale, then if, on considering such evidence as the Buyer supplies to prove the Buyers assertion, the Auctioneer (or an mutually agreed Expert) decides that the lot is a forgery the sale of the lot will be rescinded and the purchase price repaid to the Buyer.

## **10. LIABILITY OF THE AUCTIONEER**

All persons attending a Sale under the conduct of the Auctioneer shall be deemed to be on the land and premises at their own risk and shall have no claim against the Auctioneer in respect of cancellation/postponement of a sale or any loss, accident or injury, however occasioned.

## **NOTE**

Many lots are of such a nature or age that precludes their being in pristine condition. Some catalogue descriptions may refer to damage or restoration that has been done. However, omission of any such reference does not imply that a lot is free from defects nor does the reference to any defect imply the absence of others.

- 1 4 letters from Motive Power Superintendant at Swindon (1951) concerning public visits to Swindon Factory (works) and MPD. Envelope stamps have BR pin marks.
- 2 Wagon Repairs Gloucester "Repairs Advise" Plate.
- 3 Cambrian Wagon and Engineering Company Builders Plate.
- 4 Drop case wall clock.
- 5 Modern road sign, level crossing.
- 6 GWR Coat and trousers stamped BR 1952 with GWR buttons, and a GWR service badge, size Large.
- 7 GWR Buttons, assorted x8.
- 8 1970's station sign, LADIES.
- 9 Hornby model railway 00 gauge items.
- 10 Two Firing Shovels (one with broken handle) and a GWR 2 gallon water can (lid missing, not sound).
- 11 GWR galvanized bucket.
- 12 GWR Boundary marker, 1912. On 12" bridge rail post.
- 13 Telephone Insulators. 2 x GWR, 2 x LNER, 1 x LMS, 5 in total.
- 14 Ticket Nippers x 2.
- 15 BR(W) Tin Box 19"x 11"x 5" with brass handles. Hasp closure, no lock.
- 16 BR(W) Hand Brush, unused.
- 17 LNER Dinner plate by W.H. Grindley & Co Ltd. Intertwined company initials, blue/gold banding to rim, some gold loss.
- 18 BR line side speed restriction sign, 20mph with left facing arrow, on 9.5ft high pole. To be collected from North Wilts address.

- 19 2 GWR blankets. One needs a heavy general repair.
- 20 Standard Railway Wagon Company (Stockport) 1959 Builders Plate.
- 21 A galvanised conical water container embossed BR(S).
- 22 Box of buttons, badges, horse brasses etc.
- 23 LNER carbide lamp (glass cracked).
- 24 Tray of Powell Dyffryn paperwork regarding shipping loads etc.
- 25 Box of mixed China and silver plate.
- 26 Box of official publications plus a number of railway observer booklets.
- 27 A 'LMS CARS' drinking glass.
- 28 Large box of miscellaneous prints, framed pictures, a GWR game, postcards, worth a look!
- 29 Box of hardware, signs, lamp, horse brasses etc. 3 items in total.
- 30 A GER stoneware bottle. Some restoration.
- 31 Box of railway dvds (never opened) and a few videos.
- 32 Box of 7 yellow enamel armbands, 'persons in possession' ex stores never used.
- 33 A modern collectible an EWS rucksack, Balfour Beatty high viz jacket, hard hat, enamel armband plus a new bardic lamp.
- 34 A packet of paper labels (120+) S&D, TVR Southern noted.
- 35 A wooden model of a B12/16 (needs attention) and brass model of the rocket.
- 36 A railway convalescent jug (small chip to base).
- 37 A large LMS repro poster. Framed and glazed. Would benefit from a new frame.

- 38      A small cast iron plate 'generally repairs' by Bucknall Saw Mills N.S.R (North Staffs Railway).  
A rare plate not often seen.
- 39      A comprehensive operating manual for early DMU's and a Tinken Bearing book, operating  
manuals for D75xx and D80xx diesels. Ideal for a heritage railway.
- 40      A collection of modern collectibles from EWS and DB Schenkel. Promotional items, hats, pens,  
golf balls, head rest plus a large unused EWS sticker. Interesting lot.
- 41      A tray of small reprinted posters ideal for framing.
- 42      A box of railway jigsaws. 2 GWR and 7 others all reputedly complete!
- 43      An LNER centenary book 1925 plus a few other odds, tickets, invites etc.
- 44      A small BR(M) poster regarding walking and working with your back to oncoming trains  
presented in a modern frame.
- 45      A conical water container. Based on the SR design. This one is embossed BR(S) to base.
- 46      2 New/Old Diesel Drivers dust type jackets.
- 47      20 MPH sign possibly LSWR, ex Woking yard.
- 48      2 mint carriage board labels BARNSTAPLE JUNCTION BR(S).
- 49      Warning please mind your head when leaving seat (traffolite).
- 50      LMS gauge glass protector.
- 51      Bullied type loco headlamp, which has a new replacement front plate.
- 52      Wagon plate B951206.
- 53      Wheel tappers hammer.
- 54      SR PMV dimension plate.
- 55      Whitfield safe makers plate ex SR booking office.

- 56 East African Railway framed photo 59 Class Garrett 5915 plus framed diagram of 59 class.
- 57 2 x BR tail lamps.
- 58 BR(M) oil pourer.
- 59 BR detonator tin.
- 60 2 X WD Quart pots (ex Portsmouth Dockyard).
- 61 BR signal lamp oil pourer (1 gall).
- 62 BR loco oil container (1 gall).
- 63 BR loco oil container (½ gall).
- 64 2 x BR first aid boxes with contents ex MK1.
- 65 2 x Grafton Steam crane pressure gauges (ex SR Eastleigh).
- 66 BR(S) Steam crane stability warning plate enamel.
- 67 Danger O/H live wires do not lift stove pipe ex steam crane.
- 68 BR sand applicator.
- 69 GWR water gauge spanner.
- 70 7 loco spanners Whitworth embossed BR.
- 71 Brass Clock Key from SR Inspection Saloon
- 72 4 x Enamel Nigerian Railway Cap Badges.
- 73 5 assorted pre-grouping spanners (LSWR SECR GWR).
- 74 LMS Paycheck (Gloucester), LMS WW2 Service Badge, BR(NE) Cap Badge (rare), 2 x LNER Brass Buttons. 5 items in total.
- 75 Ian Allen ABC, LMS, Summer 1953. No Underlining.

- 76 4 automotive spanners, embossed AEC etc.
- 77 2 Wills Cigarette card albums "Railway Engines" & "Railway Equipment" both vgc.
- 78 3 x Replica Loco Cap Badges. LBSCR x 2 & MGNRJ x 1.
- 79 Locomotives of the Southern Railway 1925.
- 80 Southern Railway rule book.
- 81 Practical hints for footplatemen.
- 82 War on the line by Bernard Darwin.
- 83 Working timetable 26/3/1934.
- 84 Ashford works centenary 1947.
- 85 History of the Southern Railway - Dendy Marshall 1937.
- 86 The Westinghouse air brake, Locomotive Publishing Co.
- 87 Superheating on Locomotives, Locomotive Publishing Co.
- 88 The locomotive and its development 1803- 1896, Clement Stretton.
- 89 Railway Steam Cranes by John S Brownlie.
- 90 Handbook for Railway locomotive enginemen BTC.
- 91 Bundle of 12 Ian Allen loco spotters books.
- 92 Trains Album (S), Ian Allen.
- 93 The book of the Schools class, Ian Allen 1947.
- 94 My best Railway photos no.6 Southern & GWR, Ian Allen 1948.
- 95 Our Home Railway vol 2 1920.



- 96 LSWR LBSCR SECR locomotives IA 1947 nicely bound as one volume.
- 97 Locomotives of the Southern Railway (W Sect.) W G Tilling 1931.
- 98 LMS Hotels bottle.
- 99 Gold Coast Railway transfer on frame.
- 100 BR(W) Home 3ft Signal Arm. Complete with Spectacle Plate.
- 101 The Railway Executive "INSTRUCTIONS FOR STATION NAME AND DIRECTION SIGNS" inc Totems and Door Plates. Sizes also shown. A must if collect BR enamels, 27th September 1948. Don't miss this rare booklet.
- 102 2 Signal Box Lever Description Plates in Traffolite. FROM UP SDGS 3 & 4 TO UP MAIN and TRAILING POINTS DOWN FAST & FROM SLOW.
- 103 A quantity of Traction Engine Rally Programmes
- 104 A box of Misc. Railway paperwork, interesting Carriage Window Stickers noted.
- 105 BR(W) small ladder labelled "AVONMOUTH TOWN STATION".
- 106 SIGNAL BOX DIAGRAMS Vol Three by G. A. Pryer GREAT WESTERN AND SOUTHERN - SOMERSET AND DORSET JOINT RAILWAY. Sought after, slight crease on the cover.
- 107 4 Oil Cans.
- 108 A quantity of Railway Souvenir boxes of matches.
- 109 4 NATIONAL CARRIERS Ltd Drivers Hats. 3 have embroidered badges, 1 has metal badge. Green, blue and black examples.
- 110 Brass glass display holder from Tyers No.6 Tablet Instrument.
- 111 A large box of Bus/Train tickets from all over the world, mostly paper.
- 112 PLYMOUTH, DEVONPORT & SOUTH WESTERN JUNCTION RAILWAY (Bere Alston & Callington Line) small handbill "Cheap Market Tickets", February 1908, small scorch mark.

- 113 A box of maritime paperwork, including a lot of Royal Fleet Auxiliary special issue items.
- 114 British Railways (Southern Region) poster numbers and classes of engines, 1st Jan 1960. Fascinating record at nearly the end of steam.
- 115 Victorian Cast Iron Skip number plate, GW Co Ltd, SLAITHWAITE 1523.
- 116 Earthenware liquid vessel, SAXON & CO, BIRMINGHAM, 1943.
- 117 GWR Framed and Glazed Timetable Poster, 25th Sept 1939. National Emergency Issue because of the outbreak of the Second World War, Double Size. London (Paddington) to Fishguard Main Line and Welsh Branches. Several small stains.
- 118 Victorian Cast Iron Skip number plate, GW Co Ltd, SLAITHWAITE 1326.
- 119 4 Wooden Ammo boxes.
- 120 BUILT BY STEPHENSON, Vulcan Foundry & Robert Stephenson Publication 1957.
- 121 Repro. ORENSTEIN & KOPEL (Paris), 1902 CATALOGUE OF LOCOMOTIVES No 552, nicely reprinted in 2009, VGC.
- 122 Metal notice from BRISTOL ST. PHILLIPS MARSH DIESEL DEPOT. 2+7 HST STOP POSITION. Used for HST sets coming in for servicing 7 Coaches & 2 Power Cars. Ensured set was stopped in the correct spot for refuelling in the shed.
- 123 A quantity of Ordnance Survey maps, a good mix of locations.
- 124 GWR Signal Box brass instrument labels, Tos: 29.., 72.. & 4.6 (3 items).
- 125 Ian Allen ABC, Combined Volume, Winter 1961/62, no underlinings except a few small crosses. Slight damage to cover.
- 126 GWR Signal Box Instrument Labels, 2 x brass (No. 73 & 5) and Ivorine (No. 20). 3 items.
- 127 BR(W) Cast Iron Signal Lamp mounting bracket, G2240 and a similar item.
- 128 Somerset & Dorset Rly track chair 1887.
- 129 GWR track chair, Aug 1925.

- 130 GWR track chair, Dec 1949.
- 131 Canadian Pacific Railway 1937 publication "Factors in Railway and Steamship Operation".
- 132 BR(W) Cast iron Signal Arm Spindle.
- 133 GWR Paperwork, over 100 items, some duplication.
- 134 GWR Wooden Post Signal Arm Plate (not spectacle) not marked but has old yellow distant paint visible.
- 135 Midland Railway Paperwork, over 100 items, some duplication.
- 136 Signal counter balance weight bar (no weight).
- 137 Southern Railway/SER/S.E. & C rly/LSWR paperwork, over 100 items, some duplication.
- 138 3 x HORNBY "0" Gauge tinplate signals (all boxed), 1 x Distant, 2 x Home & Distant.
- 139 SR Accommodating Crank with mounting plate dated 1948.
- 140 Wagon D Plate, B427185, 21 tons, Met Cammell, 1958.
- 141 Cast Iron Signal Wire Adjuster.
- 142 SR Accomodating Crank on mounting plate (corner missing), dated 1944.
- 143 1 x GWR & 1 x BR(W) Galvanised Signal Arm Stops.
- 144 National Transport Tokens, approx £33 worth in 50p tokens and £10 in £1 tokens. White metal with various designs on reverse. These were issued to Pensioners etc until replaced by the very useful National Bus Passes.
- 145 Signal Wire Pulley wheels and holders, eight mounted on a post in two quads, 4 galvanised.
- 146 Similar to lot 145 except loose in doubles/holders. 4 galvanised, and 2 LMS not galvanised.
- 147 A box of misc Railwayana including several pieces of GWR (marked) Silverware and a BR Grease Top Drivers Cap with battered BR(M) enamel badge.

- 148      A couple of GWR (part) Broad Gauge wooden securing screw pins used for fixing the cradle that held the line, two on each sleeper or tie.
  
- 149      RCTS Publications, Locomotives of the GWR vol 1, 5, 6, 7, 8, 9 & 11.
  
- 150      100 LSWR/SR Luggage Labels, some duplication.
  
- 151      A selection of Ian Allen ABC Loco Spotter Books.
  
- 152      GW150 Bristol Area poster framed "Ogden's Midnight Flake".
  
- 153      BR Brass Pyrene Fire Extinguisher, needs restoring.
  
- 154      A roll of galvanised Signal Wire and several small whipped lengths with eys attached.
  
- 155      Quantity of GWR/BR(W) Rule books and Signalling Regs and GA2s. Worth a look.
  
- 156      Lot of 17 miscellaneous Railway books. Varied assortment.
  
- 157      Gen'ly Repaired/Re-bodied Shildon 6003, 1234-1979.
  
- 158      Framed and glazed reproduction cigarette card collection.
  
- 159      GWR "Gross Weight not to Exceed 24 Tons" Wagon Plate.
  
- 160      Small framed Repro poster LNER, Edinburgh.
  
- 161      Enamel Wagon Plate Notice, for the Steetley Lime & Basil Co Ltd, Good Condition.
  
- 162      BR(W) Carriage Board, Paddington, Bristol, Weston-super-Mare.
  
- 163      British Railways Board Cast Iron Notice, Private Way, Highways Act 1959.
  
- 164      Leather Token Key Holder.
  
- 165      Alloy English Electric Plate.

PAGE LEFT BLANK FOR YOUR NOTES:



2



3



4



17



18



20



38



21



47



48



49



51



50



52





53



54



55



58



60



59



61



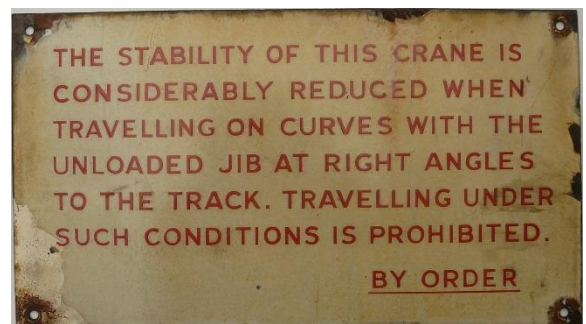
64



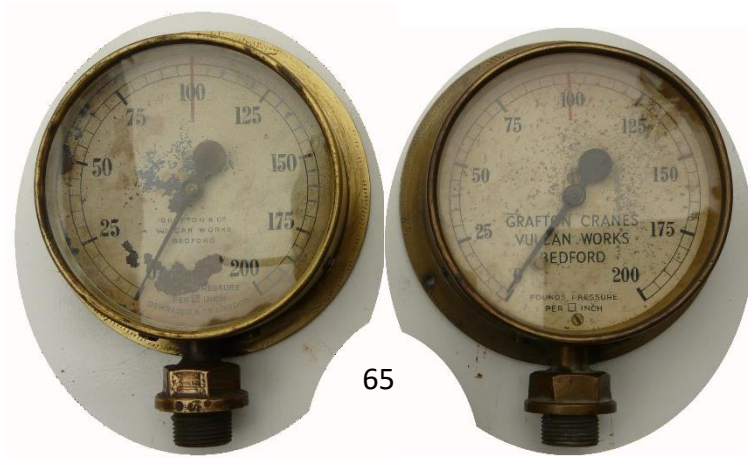
63



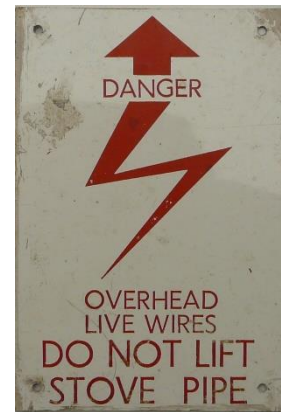
62



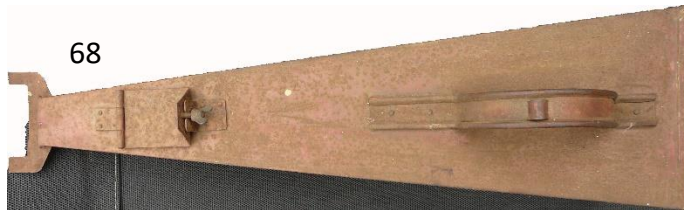
66



65



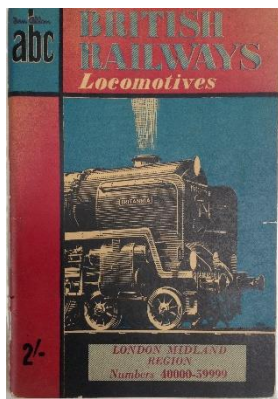
67



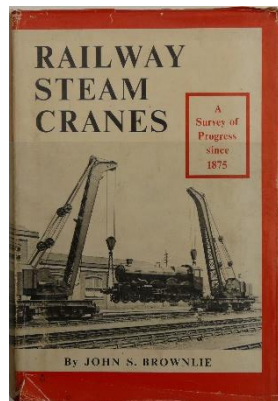
68



71



75



89



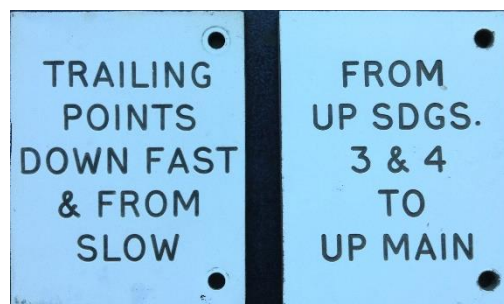
98



91



101

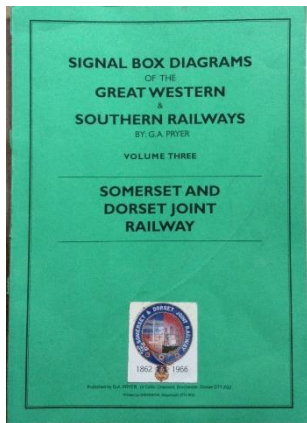


102

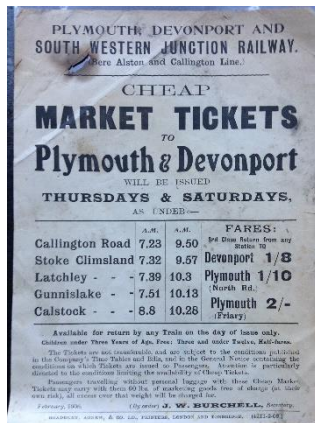


105





106



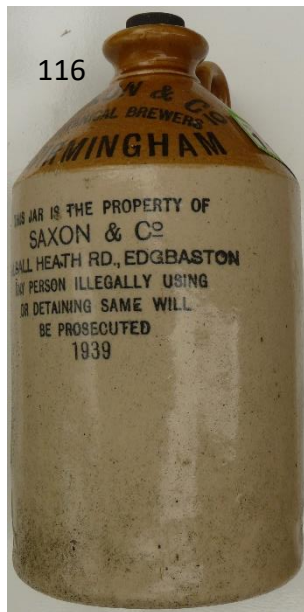
112



115



118



116



124



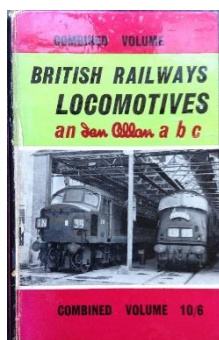
117



122



161



125



126



163



166



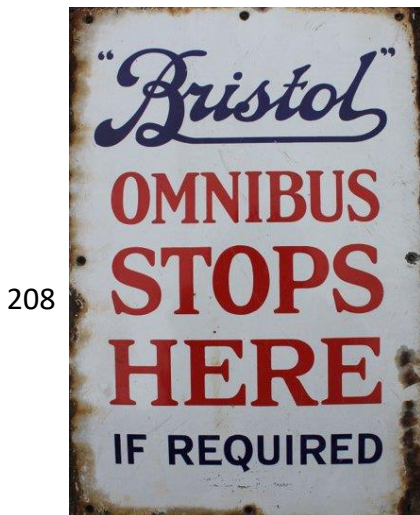
167



189



192



208



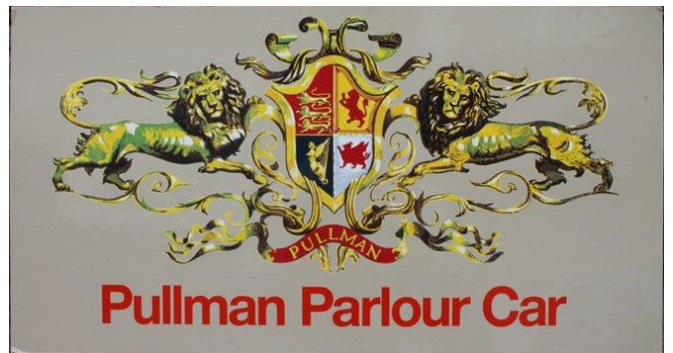
168



187



188



203



209



210



211



212



214





213



216



219



220



221

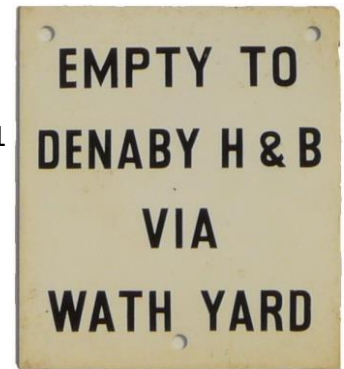


222



223

231



232



233



234



235



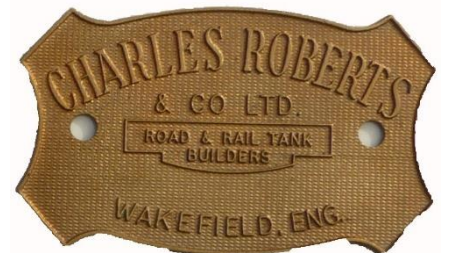
236



237



246



248





247



249



250



251



257



258



259



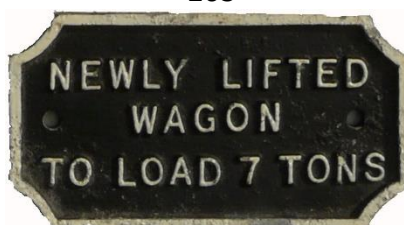
260



261



262



263



264



265



266



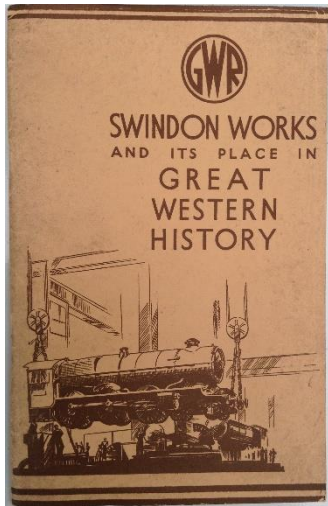
285



277



328



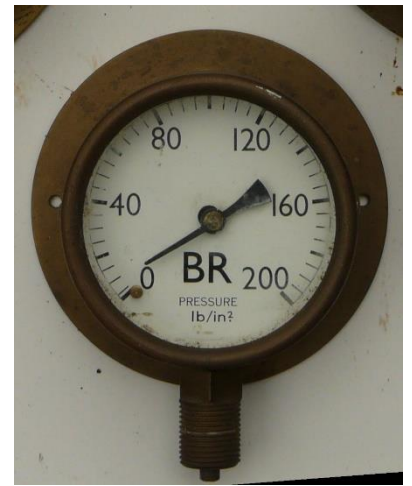
329



331



332



336



335

PAGE LEFT BLANK FOR YOUR NOTES:

PAGE LEFT BLANK FOR YOUR NOTES:

PAGE LEFT BLANK FOR YOUR NOTES:



- 166 Cast Iron Wagon Plate, W Rigley & Sons, No 2460 Bulwell.
- 167 Trans-Clyde Rail Network Plastic Map.
- 168 GWR Carbide Lamp by Eastgate and Sons, Birmingham.
- 169 Union Pacific Ashtray with makers name on the reverse.
- 170 An album of GWR locomotive photographs.
- 171 STONEFIELD (Cardiff) Signal box diagram.
- 172 Gradient, curve and speed diagram for the 1954 Ocean Special, PLYMOUTH to PADDINGTON, unique.
- 173 South Wales Railway, directors report 1849.
- 174 Bristol & South Wales Union Railway debenture bond 1862.
- 175 BR Closure poster for Stonehouse station 1972.
- 176 BR(W) Holiday Runabout Tickets poster 1950.
- 177 Lot of miscellaneous badges.
- 178 Lot of 100 GWR/BR(W) black and white photographs.
- 179 Lot of 100 GWR/BR(W) black and white photographs.
- 180 Lot of 100 GWR/BR(W) black and white photographs.
- 181 Lots of posters and pictures including Cuneo's.
- 182 1977 BR poster.
- 183 GWR Coat of Arms transfer.
- 184 Lot of miscellaneous handbills, mainly GWR/BR(W).
- 185 Twenty destination strips from an indicator board – mainly South West locations.

- 186 Twenty destination strips from an indicator board – mainly South Wales locations.
- 187 Signalling token, 'COOKHAM – BOURNE END'.
- 188 Original GWR signal box shovel, dated 1945.
- 189 Ten railway and NCB paycheques.
- 190 Miscellaneous selection of tickets – worth a delve.
- 191 Sixty black and white railway photographs of Devon locations.
- 192 Ten railway and NCB paycheques.
- 193 Sixty black and white railway photographs of Devon locations.
- 194 Lot miscellaneous buttons and badges.
- 195 Two volumes of the GWR magazine, for 1929 and 1946, in official bindings.
- 196 Two volumes of the GWR magazine, for 1932 and 1942, in official bindings.
- 197 Two volumes of the GWR magazine, for 1939 and 1944, in official bindings.
- 198 Box of interesting softback books.
- 199 Box of interesting softback books.
- 200 British Railways (Scottish Region) double royal poster 'Race Specials to Hamilton Friday & Saturday 18th & 19th July' Details of Train times and Fare. Dated June 1958. Slight loss on left Hand Side.
- 201 Coat Hanger marked 'B.T. Hotels'.
- 202 Double Royal poster dated Nov 1969 'The 35 minute-Skirt' Dover – Bologne Hovercraft 35 minutes by Seaspeed. Picture of Blond Lady in mini-skirt in front of Seaspeed Hovercraft.
- 203 Plasticised cardboard sign 'Pullman Dining Car' with Pullman Crest. Very good condition and still in original plastic bag!

- 204 British Rail poster 'Settle – Carlisle Railway Centenary' To meet popular demand an additional Special Train will run on Saturday 15th May (1976). Details of Fares and Times. Train hauled by Midland Compound no. 1000 over S & C.
- 205 British Railways System Map dated Aug 1962 (before Dr Beeching was swinging his axe with vengeance !). Couple of repaired tears.
- 206 Cast Iron plate 'G W R Loco Dept No 252'
- 207 Poster dated Nov 1969 ' Some People Just Go for the Ride' Dover – Bologne Hovercraft – 35 minutes Seaspeed.
- 208 Enamel Sign ' Bristol (in Bristol Script) Omnibus Stops Here if Required'
- 209 GWR Culvert Plate "19"
- 210 "LNER Maintenance Ends" Plate
- 211 BR(W) Wagon Registration Plate (NTE 100 TONS).
- 212 LMS Track Circuit Signal Plate (Fully Numbered).
- 213 W.H. Davis Wagon Builders Plate.
- 214 Two GWR Cast Iron Seat Ends (Shirt Button Type).
- 215 Wooden GWR Mile Post 10/1.
- 216 4 items of uniform. GWR and LMS, jackets and waistcoats. Very good condition.
- 217 Cast Iron Notice, For Repairs, National Coal Board, Ystrad Mynack, Glam. Very Large & Heavy.
- 218 BR, Small Signal operating rod.
- 219 LNER "10 Tons Distributed load" Plate.
- 220 Old NER Wagon Plate "To Carry 8 Tons".
- 221 SR Carriage Route Availability Plate "O".

- 222 LMS 4000 Gallons Water Capacity Tender Plate, in brass with traces of maroon paint.
- 223 Aluminium "Generally Repaired" Plate.
- 224 Box of books.
- 225 Similar to lot 224.
- 226 Box of ephemera.
- 227 Box of mixed railway items.
- 228 Cast Iron "BEWARE OF TRAINS" notice.
- 229 Box of assorted railway items.
- 230 Box of assorted railway magazines
- 231 Tin plate wagon return plate "Empty to Denaby H + B via Wath Yard"
- 232 "Due for Paint 1959" plate.
- 233 Set of loose Cast Iron numerals "A15", possibly ex signal.
- 234 Early post-nationalisation wagon D-plate, E303768, Butterley 1950.
- 235 Round Standard Railway Wagon Co, Stockport, Builders Plate.
- 236 LMS Cast Iron Bridgeplate No. 14
- 237 Cast Iron Polish Steam Cabside, 138.
- 238 Station Gas Lamp, complete working order, very good condition, Sugg Rochester Hanging (small type).
- 239 Signal Lamp with Lamp In/Lamp Out mechanism but no burner.
- 240 Carriage Print (framed & glazed) "St. Johns College, Cambridge".
- 241 GWR Photochrome Carriage Print (framed & glazed) "Tavistock Guild Hall Square".

- 242 LSWR Signal Finial, WB & SS Co Ltd (Westinghouse Brake & Saxby Signal Co Ltd).
- 243 LM Platform Lamp (glazed) ex. Nailsworth Station.
- 244 Locomotive Magazine, Summer Edition, No 7 issued 1910.
- 245 GWR Single Line Key Carrier (small type).
- 246 GNR Cast Iron Bridgeplate No 14.
- 247 Wagon Repairs Chesterfield "Repairs Advise" Plate.
- 248 Brass Charles Roberts Tank Makers Plate.
- 249 Metropolitan Cammel Midland Works 1937 Wagon Builders Plate.
- 250 Chas Roberts 1958 Wagon Builders Plate.
- 251 Ornate G.R. Turner Ltd, 1952, Wagon Builders Plate
- 252 French Railways Poster "Limousin".
- 253 Replica Dubbs & Co Worksplate.
- 254 A selection of Track Plans/Signal Box Diagrams (office copies)
- 255 10 x Pocket Size Westinghouse Instruction Manuals for Braking & Signalling Systems (all different).
- 256 Train Register, Westbury Signal Box 1978-1980.
- 257 BR Internal Wagon "D" Plate 024435 (short version)
- 258 Swindon 1957 Wagon "D" Plate B743360
- 259 Round Standard Railway Wagon Co, Heywood 1964, Builders Plate (Large S Pattern).
- 260 Bone Shaped Cravens Wagon Builders Plate 1947.
- 261 Cast Alloy, Powell Duffryn Standard Heywood Wagon Builders Plate.

- 262 R.Y. Pickering, Wishaw, Wagon Builders Plate.
- 263 Unusual Alloy "Newly Lifted Wagon to Loan 7 Tons" Wagon Plate.
- 264 Wagon Bogie Identification Number Plate "FBT 6(M)".
- 265 Gloucester R.C. & W Co. Builders Plate (G Shaped).
- 266 LNER 1929, 12 Ton Wagon Registration Plate.
- 267 7 loco spanners Whitworth embossed BR(S).
- 268 6 solid Brass 2oz weights from Fry's Chocolate Factory. Used for measuring bars of chocolate.
- 269 A Golden Railroad spike. Boxed souvenir from NIMPKISH Timber Railroad, Canada.
- 270 7 loco spanners Whitworth embossed SR.
- 271 A Collection of Model Railway items (2 boxes).
- 272 A small village of 10 Hornby "SKALEDAL" resin buildings including the village church. These are quality items being in resin are far superior to card buildings.
- 273 6 loco spanners Whitworth embossed BR(W).
- 274 A Railroad Share Certificate issued by the "New York Central & Hudson River Railroad" dated 1898 it is for \$1000. Very suitable for framing.
- 275 A large collection of model vans.
- 276 5 WD spanners Whit.
- 277 GWR C/I cabside, 5214. 2-8-0T. Built Swindon 1923. Last Depot was Aberbeeg (86H). Withdrawn 30/09/1964, Scrapped RS Hayes/Birds, Tremains Yard, Bridgend 30/11/1964.
- 278 Reproduction GWR brass cabside, 5067
- 279 Reproduction GWR smokebox plate, 5067

- 280 Alloy diesel locomotive nameplate "SIR ALFRED WOOD".
- 281 4 x Railway Lamps in poor condition, suitable for spares.
- 282 A pair of brass diesel air horns, some damage noted.
- 283 Small "Beware of Trains" C/I sign.
- 284 Alloy Bridge Plate 80a.
- 285 BR(M) First Aid Box.
- 286 C/I Bridge Plate 38b.
- 287 BR Bridge Plate 76a.
- 288 C/I Bridge Plate 148.
- 289 Southern Railway instruction 1929 Introduction of Colour Light Signals, Spa Road, Official Publication.
- 290 GW & SR St Budeaux 1941. New Double line Jcn. Printed joint weekly notice No B706.
- 291 BR(S) June 1954 Engine Route Availability.
- 292 Southern Rly 50 years presentation certificate. Unused very colourful.
- 293 November 1873 LSWR Timetable. An amazing survivor.
- 294 SR 1930/45 standard regulations of signalling with descriptions of Instruments.
- 295 LSWR 1919, Special arrangements with movement of troops.
- 296 West London & West London Extension Rly WTT, Sept 1931.
- 297 LSWR small Service Timetable Dec 1862. VGC. Another great survivor
- 298 South Eastern Rly Illustrated Tourist guide 1879.
- 299 A collection of LBSCRly and LSWR paperwork.

- 300 2 Railway Accident reports Farnborough Nov 1947 & Guildford Sept 1953 both on BR(S).
- 301 BR(S) Classroom instruction chart. Standard Colouring & Dimensions of Upper Quadrant Signals etc.
- 302 South Eastern & Chatham Rly. Opening of Tattenham Corner Station 1901. Amazing Signal Layout.
- 303 5 Southern Rly Signalling Instructions dated between 1928 & 1940.
- 304 BR(S) Hours opening of Signal boxes 1957. Including Isle of Wight.
- 305 Metro-Vickers publication Electrification on the LSWR June 1924.
- 306 Westinghouse publication. Signalling Waterloo to Hampton Court Jcn on the Southern Rly 1936.
- 307 Southern Rly. Introduction of Colour Light Signals Charing Cross June 1926.
- 308 BR(S) Virginia Water SB locking Chart 1971.
- 309 George Pryer & Messrs Cooke & Paul Track Diagrams Portsmouth, Southampton & Weymouth. 3 items in total.
- 310 Similar to lot 309 except Salisbury-Exeter. S&D Rly and Salisbury & Test Valley. 3 items in total.
- 311 Similar to lot 310 except North Hampshire. Bournemouth & East Dorset. S&D Rly. 3 items in total.
- 312 BR(S) Signal Box register "GODSTONE" 1969.
- 313 3 BR(S) Royal Train notices June to Aug 1953.
- 314 Southern Rly Permanent Speed Restrictions Aug 1945. GWR Bristol noted.
- 315 South Eastern & Chatham Rly. Notice of Special Trains, 1913.
- 316 BR(W) WTT. P4 1965:66 Lavington Weymouth & Bridport Branch.



- 317      Similar to lot 316 except P 1964/65 Ilfracombe. Bude. Padstow & Branches.
- 318      Similar to lot 317 except P1. 1965/66 Tavistock .Meldon Jcn Penzance & Branches.
- 319      Similar to lot 318 except P2 1965/66 Exeter to Ilfracombe & Branches.
- 320      Southern Rly. Engine Shed Signals June 1936.
- 321      Similar to lot 320 except Regs for Train Signalling on Double Lines Block Apparatus not Provided 1935
- 322      Similar to lot 321 except Sykes Standard block system of Train Signalling 1930/45.
- 323      BR(S) Carriage Working June 1965.
- 324      BR(S) Sectional Appendix Central 1960 and South Western 1972.
- 325      BR(S) Loco restrictions 1949 and Accident report Borough Market Jcn 1958 2 Items.
- 326      GWR C/I tender plate 2357, 3500 gallons Swindon.
- 327      BR(W) Lookout Mans Horn.
- 328      Alloy Souvenir plaque from Swindon works, King George V, 2315 of 3000, nicely framed.
- 329      GWR original publication in VGC, Swindon Works and its place in GWR History, pub 1935.
- 330      BR(W) Sledge type hammer with rounded ends (Planishing Hammer), used to beat out copper at Swindon Works.
- 331      Alloy Souvenir plaque of King George V. Golden Jubilee 1977, 527 of 1000.
- 332      C/I Plate, 30 Tons, 60.0 x 9.3.
- 333      A stout storage box of Hornby 0 gauge track and turntable.
- 334      A stout storage box of Hornby tin plate 0 gauge wagons and coaches (some boxed). No Locos.
- 335      BR(W) Wooden Track Gauge.

- 336      Small BR pressure gauge 0-200.
- 337      Small GWR Fire Extinguisher, good condition.

# **TOLLGATE HIRE**

***Car, Van & Truck Rental***

High Street, Hanham,  
Bristol, BS15 3HF

**Tel: 0117 960 4992**

**Fax: 0117 935 3276**

[www.tollgatehire.co.uk](http://www.tollgatehire.co.uk)

## DIRECTIONS TO VENUE

From Bristol Parkway (on foot) - Turn left onto Hatchet Rd, Continue onto Brierly Furlong, At the roundabout take the 1st exit onto New Rd, Turn right into venue.

From M4 (by car) – Leave M4 at Junction 19 towards M32, Merge onto M32 (signs for Kingswood/Filton/Ring Rd/A4174/Bristol/Fishponds/Horfield), At junction 1, take the A4174 exit to Ring Rd, At the roundabout, take the 3rd exit onto Avon Ring Rd/A4174 heading to Filton, Continue to follow A4174, At the roundabout, take the 4th exit onto Great Stoke Way, At Fox Den Rd, take the 1st exit onto Fox Den Rd, At the roundabout, take the 1st exit onto New Rd, Turn right into venue.

